



Price
£370,000

Freehold

3x  1x  2x 

**South Lane, Sutton
Valence, Maidstone,
Kent, ME17**

OVER 60?

Secure this property
for up to **59% less!**

Wards
Helping you move forwards



Main features

- Beautiful conservatory to the rear
- Large driveway and garage
- Spacious throughout with room to entertain
- Set in a sought after location nearby to local schools, shops and main line train station
- Stunning garden with a bar area and outbuildings

Accommodation

GROUND FLOOR

Entrance Hall

Lounge: 13'5 x 13'3 (4.09m x 4.04m)

Kitchen: 8'6 x 8'1 (2.59m x 2.47m)

Bathroom

Conservatory: 13'1 x 10'9 (3.99m x 3.28m)

FIRST FLOOR

Landing

Bedroom 1: 13'6 x 10'4 (4.12m x 3.15m)

Bedroom 2: 12'1 x 8'8 (3.69m x 2.64m)

Bedroom 3: 8'2 x 7'6 (2.49m x 2.29m)

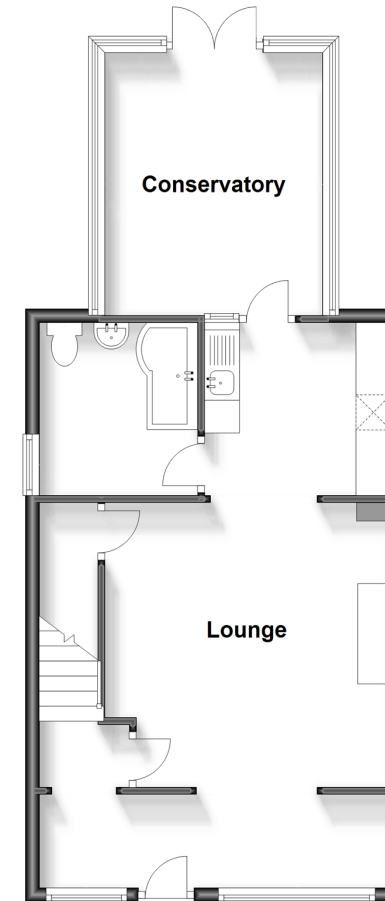
OUTSIDE

Front and Rear Gardens

Driveway and Garage

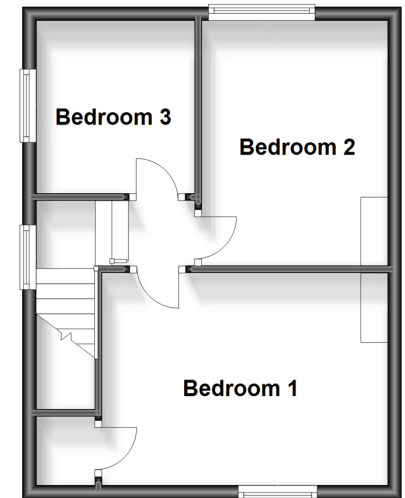
Ground Floor

Approx. 52.5 sq. metres (565.3 sq. feet)



First Floor

Approx. 33.9 sq. metres (365.1 sq. feet)



Call Headcorn - 01622 890435 ■ wardsof Kent.co.uk

- Legal advice should be taken to verify fixtures/fittings, planning, alterations and/or lease details
- Appliances & services are untested, dimensions are approximate and floor plans are not to scale
- Through a Homewise Home For Life Plan people aged 60+ can secure this property for up to 59% less, by purchasing a Lifetime Lease.



12721790/20231025/CF/TB