



**Price**  
**£435,000**

**Freehold**

4x  2x  1x 

**Baker Road, Maidstone,  
Kent, ME17**

**OVER 60?**

Secure this property  
for up to **59% less!**

*Wards*  
Helping you move forwards



## Main features

- Beautifully presented home providing well proportioned accommodation throughout
- Modern kitchen/breakfast room together with spacious lounge overlooking garden
- Adjacent driveway and garage
- En-suite shower room
- Downstairs cloakroom

## Accommodation

### GROUND FLOOR

Entrance Hall  
Cloakroom  
Lounge: 15'8 x 13'7 (4.78m x 4.14m)  
Kitchen/Diner: 13'7 x 10'4 (4.14m x 3.15m)

### FIRST FLOOR

Landing  
Bedroom 3: 13'8 x 11'3 (4.17m x 3.43m)  
Bedroom 4: 13'8 x 11'1 (4.17m x 3.38m)  
Bathroom: 8'3 x 6'3 (2.52m x 1.91m)

### SECOND FLOOR

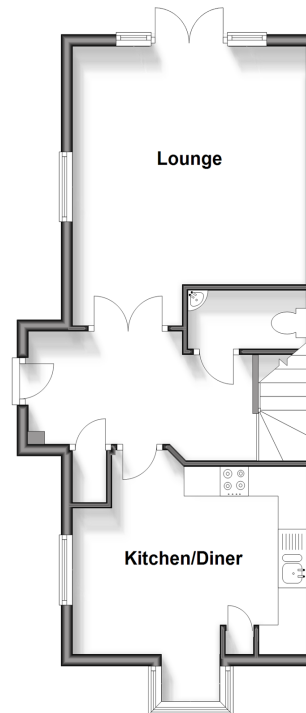
Landing  
Bedroom 1: 13'7 x 11'0 (4.14m x 3.36m)  
En-suite Shower Room: 8'1 x 6'4 (2.47m x 1.93m)  
Bedroom 2: 13'7 x 8'10 (4.14m x 2.69m)

### OUTSIDE

Garage and Off Road Parking  
Enclosed Rear Garden

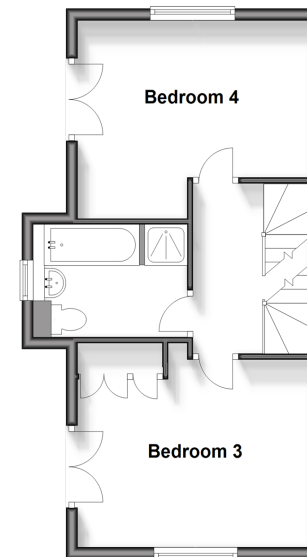
### Ground Floor

Approx. 45.0 sq. metres (484.8 sq. feet)



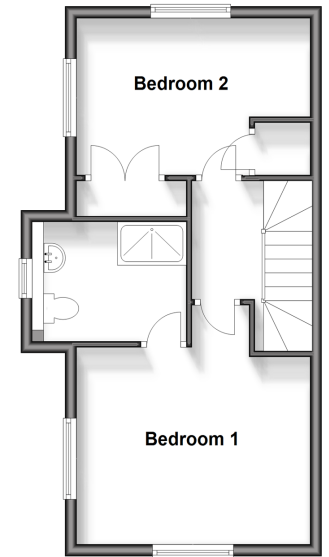
### First Floor

Approx. 38.5 sq. metres (414.8 sq. feet)



### Second Floor

Approx. 38.7 sq. metres (416.1 sq. feet)



**Call Bearsted - 01622 730955 ■ [wardsofkent.co.uk](http://wardsofkent.co.uk)**

- If buying to let, the energy rating will need to be improved to at least 'E' rating before you can let the property
- Appliances & services are untested, dimensions are approximate and floor plans are not to scale

- Legal advice should be taken to verify fixtures/fittings, planning, alterations and/or lease details
- Through a Homewise Home For Life Plan people aged 60+ can secure this property for up to 59% less, by purchasing a Lifetime Lease.



12721796/20240115/SG/JW