



OVER 60?

Secure this property
for up to **59% less!**

Price
£335,000

Freehold

2x  1x  1x 

**Lower Road, Sutton
Valence, Maidstone,
Kent, ME17**

Wards
Helping you move forwards



Main features

- A picturesque cottage set in the heart of the peaceful village of Sutton Valence
- Deceptively spacious inside
- 3 storey living space
- Impeccably designed rooms
- New updated kitchen and a cozy wood burner for those chilly winter nights

Accommodation

GROUND FLOOR

Entrance Hall

Lounge/Diner: 15'1 x 10'5 (4.60m x 3.18m)

Kitchen: 14'0 x 9'1 (4.27m x 2.77m)

FIRST FLOOR

Bedroom 1: 12'5 x 12'0 (3.79m x 3.66m)

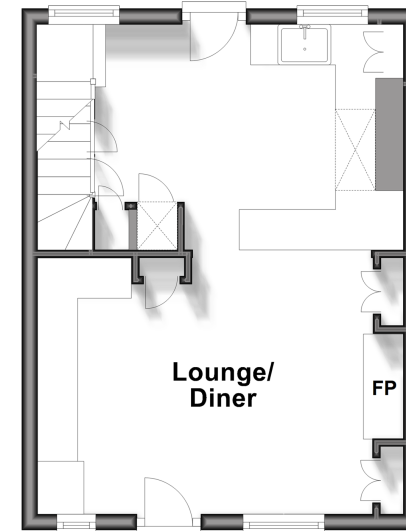
Bedroom 2: 15'6 x 11'0 (4.73m x 3.36m)

Bathroom

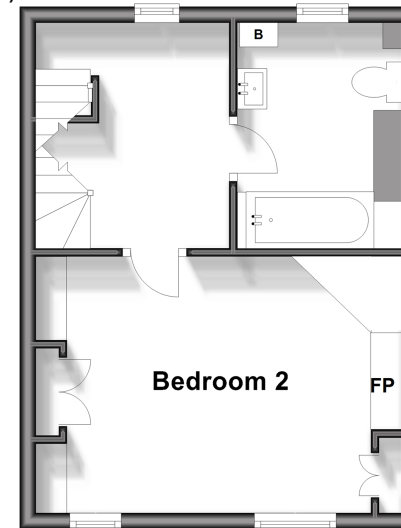
OUTSIDE

Courtyard Garden

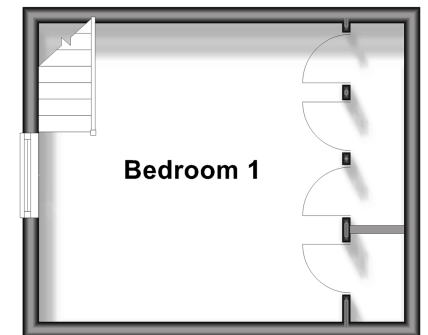
Ground Floor
Approx. 27.8 sq. metres (298.7 sq. feet)



First Floor
Approx. 27.8 sq. metres (298.7 sq. feet)



Second Floor
Approx. 16.9 sq. metres (182.1 sq. feet)



Call Headcorn - 01622 890435 ■ wardsofkent.co.uk

- If buying to let, the energy rating will need to be improved to at least 'E' rating before you can let the property
- Legal advice should be taken to verify fixtures/fittings, planning, alterations and/or lease details
- Appliances & services are untested, dimensions are approximate and floor plans are not to scale
- Through a Homewise Home For Life Plan people aged 60+ can secure this property for up to 59% less, by purchasing a Lifetime Lease.



12721798/20240206/HS1/TB