



Price
£375,000

Freehold

3x  1x  1x 

**Bell Way, Kingswood,
Maidstone, Kent, ME17**

OVER 60?

Secure this property
for up to **59% less!**

Wards
Helping you move forwards



Main features

- Immaculately presented family home
- Partly converted garage used as a gym
- Large ample driveway
- Low maintenance rear garden
- Located within walking distance of the school, shop & woods

Accommodation

GROUND FLOOR

Entrance Hall

Lounge : 14'10 x 9'2 (4.52m x 2.80m)

Dining Area: 11'1 x 7'6 (3.38m x 2.29m)

Kitchen: 9'3 x 7'11 (2.82m x 2.41m)

Cloakroom

FIRST FLOOR

Landing

Bedroom 1: 12'1 x 9'3 (3.69m x 2.82m)

Bedroom 2: 10'9 x 9'6 (3.28m x 2.90m)

Bedroom 3: 7'4 x 7'3 (2.24m x 2.21m)

Bathroom

OUTSIDE

Front and Rear Gardens

Gym/Former Garage : 12'1 x 4'5 (3.69m x 1.35m)

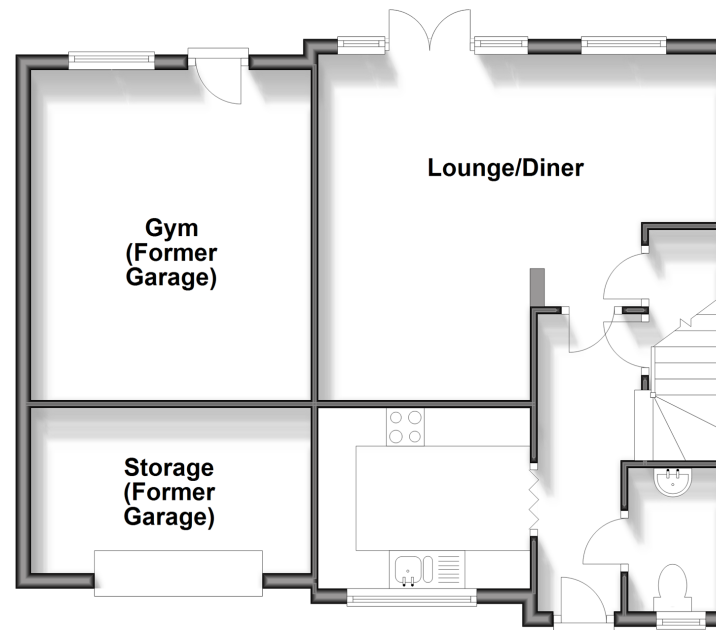
Storage/Former Garage

Summer House/Workshop

Driveway

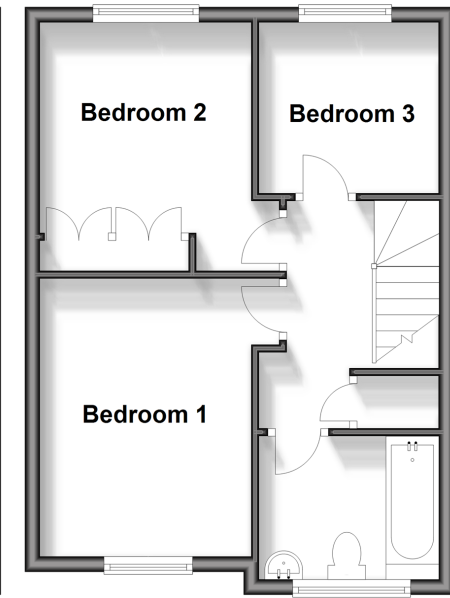
Ground Floor

Approx. 62.9 sq. metres (676.6 sq. feet)



First Floor

Approx. 38.0 sq. metres (408.9 sq. feet)



Call Headcorn - 01622 890435 ■ wardsof Kent.co.uk

■ Legal advice should be taken to verify fixtures/fittings, planning, alterations and/or lease details
 ■ Through a Homewise Home For Life Plan people aged 60+ can secure this property for up to 59% less, by purchasing a Lifetime Lease.

■ Appliances & services are untested, dimensions are approximate and floor plans are not to scale



12721803/20240416/DB/HS1