



Price
£200,000

Leasehold

2x  1x  1x 

**Chulkhurst, Biddenden,
Ashford, Kent, TN27**

OVER 60?

Secure this property
for up to **59% less!**

Wards
Helping you move forwards



Main features

- Top floor Maisonette set in a quiet cul-de-sac
- Spacious throughout with 2 double bedroom
- Fabulous private rear garden
- Chain free
- Within walking distance of local amenities in Biddenden

Accommodation

TOP FLOOR

FIRST FLOOR

Entrance Hall

Lounge/Diner: 16'0 x 10'0 (4.88m x 3.05m)

Kitchen: 14'6 x 6'6 (4.42m x 1.98m)

Bedroom 1: 15'0 x 11'0 (4.58m x 3.36m)

Bedroom 2: 12'0 x 10'0 (3.66m x 3.05m)

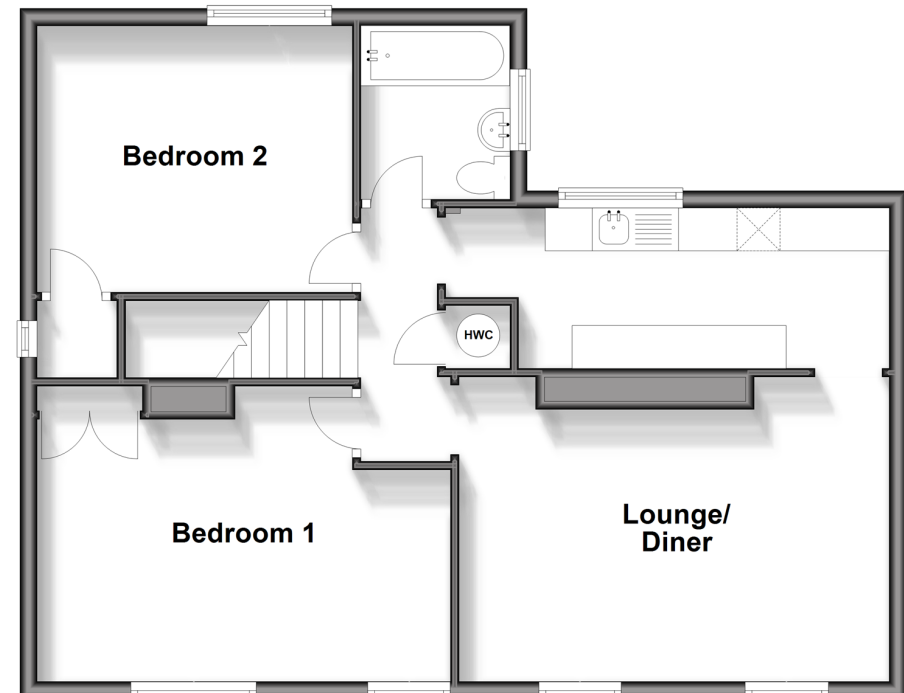
Bathroom

OUTSIDE

Rear Garden

First Floor

Approx. 66.2 sq. metres (712.7 sq. feet)



Call Headcorn - 01622 890435 ■ wardsofKent.co.uk

■ Legal advice should be taken to verify fixtures/fittings, planning, alterations and/or lease details
 ■ Through a Homewise Home For Life Plan people aged 60+ can secure this property for up to 59% less, by purchasing a Lifetime Lease.

■ Appliances & services are untested, dimensions are approximate and floor plans are not to scale



12721808/20240123/DB/HS1