

OVER 60?

Secure this property
for up to **59% less!**



Price

£400,000

Freehold

3x  1x  2x 

Ashford Drive, Kingswood, Maidstone,
Kent, ME17

Wards
Helping you move forwards



Main features

- Superbly spacious bungalow
- Located within the peaceful village of Kingswood
- Beautiful dual aspect lounge
- Patio doors leading to the rear garden
- Perfect for those wanting to put their own stamp on a property

Accommodation

GROUND FLOOR

Entrance Hall

Lounge: 20'1 (6.13m) x 12'10 at widest point (3.91m) narrowing to 9'5 at narrowest point (2.87m)

Dining Area: 14'4 x 8'1 (4.37m x 2.47m)

Kitchen: 8'11 x 7'9 (2.72m x 2.36m)

Utility

Hallway

Bathroom

Cloakroom

Bedroom 1: 11'9 x 11'3 (3.58m x 3.43m)

Bedroom 2: 9'8 x 9'0 (2.95m x 2.75m)

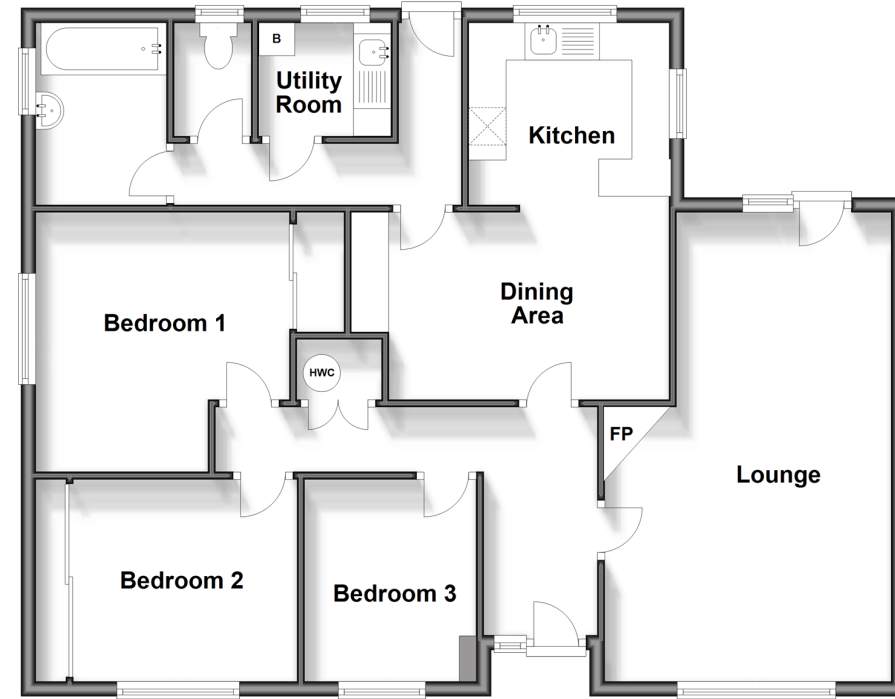
Bedroom 3: 8'9 x 7'5 (2.67m x 2.26m)

OUTSIDE

Front and Rear Gardens

Garage and Driveway

Ground Floor
Approx. 92.6 sq. metres (996.4 sq. feet)



Call Headcorn - 01622 890435 ■ wardsofken.co.uk

- Legal advice should be taken to verify fixtures/fittings, planning, alterations and/or lease details
- Appliances & services are untested, dimensions are approximate and floor plans are not to scale
- Through a Homewise Home For Life Plan people aged 60+ can secure this property for up to 59% less, by purchasing a Lifetime Lease.



12721813/20240111/HS1/HS1