



OVER 60?

Secure this property
for up to **59% less!**

Price

£425,000

Freehold

3x  2x  1x 

**Windmill Crescent,
Headcorn, Ashford,
Kent, TN27**

Wards
Helping you move forwards



Main features

- Beautifully presented throughout
- Stunning open plan kitchen/diner
- Parking in the way of a private car port and driveway
- Brilliant location
- All within walking distance of the High Street, train station & schools

Accommodation

GROUND FLOOR

Entrance Hall

Lounge: 15'6 x 10'7 (4.73m x 3.23m)

Kitchen/Diner: 18'6 x 11'7 (5.64m x 3.53m)

Cloakroom/Utility

FIRST FLOOR

Landing

Bedroom 1: 12'0 x 11'6 (3.66m x 3.51m)

En Suite Shower Room

Bedroom 2: 11'0 x 10'10 (3.36m x 3.30m)

Bedroom 3: 10'11 x 7'0 (3.33m x 2.14m)

Bathroom

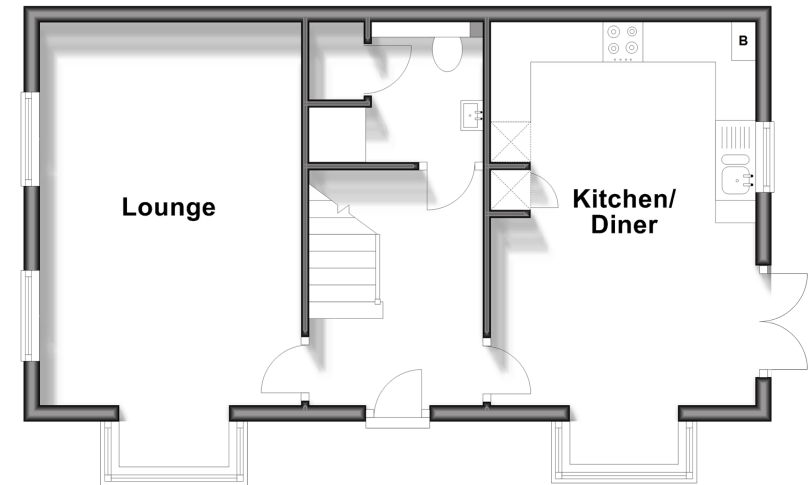
OUTSIDE

Front and Rear Gardens

Carport and Driveway

Ground Floor

Approx. 44.1 sq. metres (475.1 sq. feet)



First Floor

Approx. 44.2 sq. metres (475.3 sq. feet)



Call Headcorn - 01622 890435 ■ wardsof Kent.co.uk

- Legal advice should be taken to verify fixtures/fittings, planning, alterations and/or lease details
- Appliances & services are untested, dimensions are approximate and floor plans are not to scale
- Through a Homewise Home For Life Plan people aged 60+ can secure this property for up to 59% less, by purchasing a Lifetime Lease.



12721838/20240405/JW/HS1