



Price
£600,000

Freehold

4x  1x  2x 

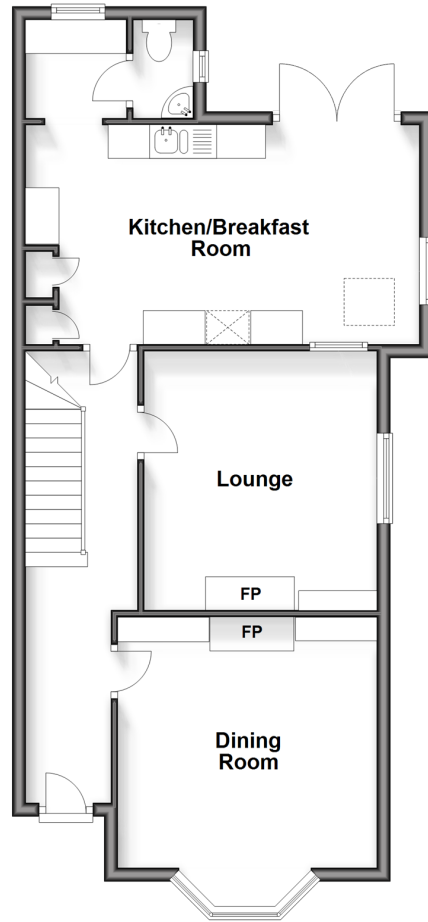
**Mill Bank, Headcorn,
Kent, TN27**

OVER 60?

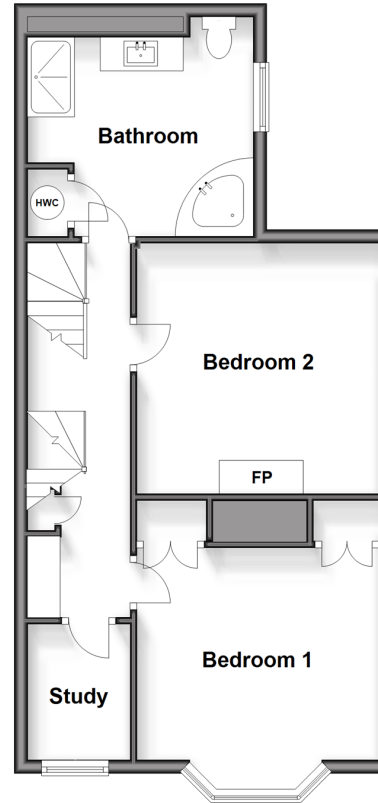
Secure this property
for up to **59% less!**

Wards
Helping you move forwards

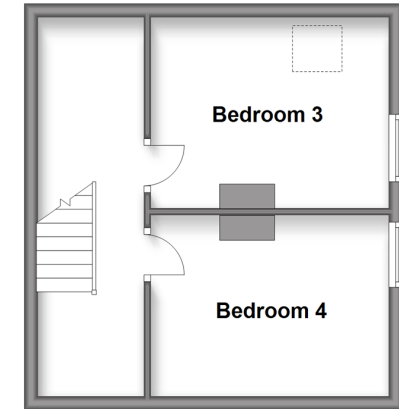
Ground Floor
Approx. 62.6 sq. metres (673.5 sq. feet)



First Floor
Approx. 51.7 sq. metres (556.2 sq. feet)



Second Floor
Approx. 29.4 sq. metres (316.6 sq. feet)



Accommodation

GROUND FLOOR

Entrance Hall
Dining Room: 14'9 x 12'8 (4.50m x 3.86m)
Lounge: 12'9 x 11'8 (3.89m x 3.56m)
Kitchen/Breakfast Room: 19'5 x 10'11 (5.92m x 3.33m)
Utility
Cloakroom

FIRST FLOOR

Landing
Bedroom 1: 12'9 x 11'9 (3.89m x 3.58m)
Study: 6'8 x 5'3 (2.03m x 1.60m)
Bedroom 2: 12'9 x 11'9 (3.89m x 3.58m)
Bathroom

SECOND FLOOR

Second Floor Landing
Bedroom 3: 12'0 x 9'3 (3.66m x 2.82m)
Bedroom 4: 11'11 x 8'10 (3.63m x 2.69m)

OUTSIDE

Front and Rear Gardens
Driveway



Main features

- Stunning extended Edwardian house bursting with period features
- Located within easy reach of Headcorn High Street
- Extensive accommodation with plenty of spaces
- Large landscaped rear garden
- Driveway for parking multiple vehicles



Nearest Schools

Primary Schools: Headcorn Primary 0.2 miles, Frittenden C of E Primary 3.1 miles, Sutton Valence Primary 3.4 miles

Secondary Schools: Sutton Valence School 3.4 miles, New Line Learning Academy 6.5 miles, Benenden School 6.9



Transport Information

Train Stations: Headcorn 0.5 miles, Staplehurst 4.6 miles, Lenham 5.8 miles



Address

Mill Bank, Headcorn, Kent, TN27



Directions

For directions to this property please contact us.



Wards
Helping you move forwards

Call Headcorn Branch 01622 890435 ■ wardsofkent.co.uk



- Legal advice should be taken to verify fixtures/fittings, planning, alterations and/or lease details
- Appliances & services are untested, dimensions are approximate and floor plans are not to scale
- Through a Homewise Home For Life Plan people aged 60+ can secure this property for up to 59% less, by purchasing a Lifetime Lease.



12721842/20240224/DB/HS1