



OVER 60?

Secure this property
for up to **59% less!**

Price

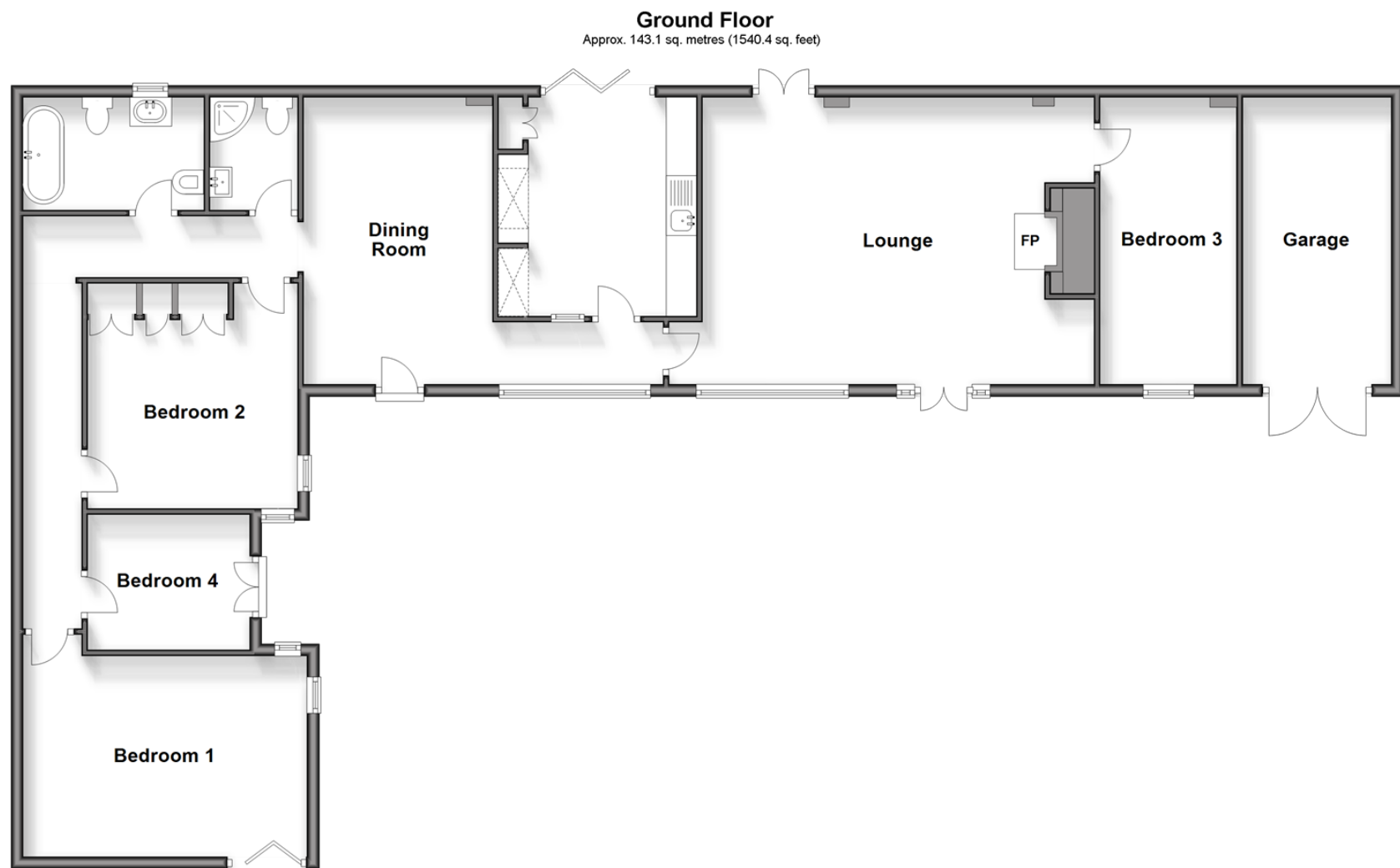
£900,000

Freehold

4x  2x  2x 

**Plumtree Road,
Headcorn, Ashford,
Kent, TN27**

Wards
Helping you move forwards



Accommodation

GROUND FLOOR

Entrance

Lounge: 21'2 x 15'7 (6.46m x 4.75m)

Bedroom 3: 15'6 x 7'4 (4.73m x 2.24m)

Kitchen: 11'11 x 10'9 (3.63m x 3.28m)

Dining Room: 15'8 x 10'3 (4.78m x 3.13m)

Shower Room

Bathroom

Bedroom 2: 12'3 x 11'3 (3.74m x 3.43m)

Bedroom 4: 8'10 x 7'4 (2.69m x 2.24m)

Bedroom 1: 15'2 x 10'11 (4.63m x 3.33m)

OUTSIDE

Front and Rear Gardens

Driveway and Garage



Main features

- Stunning converted stables
- Bespoke fixtures and fittings
- Set on a plot of 1.595 acres
- Plenty of further potential to extend (subject to planning)
- Fantastic location just outside of Headcorn village centre



Nearest Schools

Primary Schools: Headcorn Primary 1.4 miles, Sutton Valence Primary 2.7 miles, Kingswood Primary 3.4 miles

Secondary Schools: Sutton Valence School 2.7 miles, Cranbrook School 6.4 miles, High Weald Academy 6.5



Transport Information

Train Stations: Headcorn 1.7 miles, Staplehurst 3.4 miles, Marden 5.6 miles



Address

Plumtree Road, Headcorn, Ashford, Kent, TN27



Directions

For directions to this property please contact us.



Call Headcorn Branch 01622 890435 ■ wardsofkent.co.uk



- Legal advice should be taken to verify fixtures/fittings, planning, alterations and/or lease details
- Appliances & services are untested, dimensions are approximate and floor plans are not to scale
- Through a Homewise Home For Life Plan people aged 60+ can secure this property for up to 59% less, by purchasing a Lifetime Lease.



12721862/20240323/DB/HS1