



**Price**

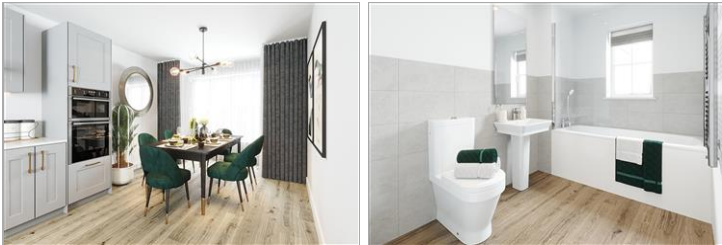
**£685,000**

**Freehold**

4x  2x  1x 

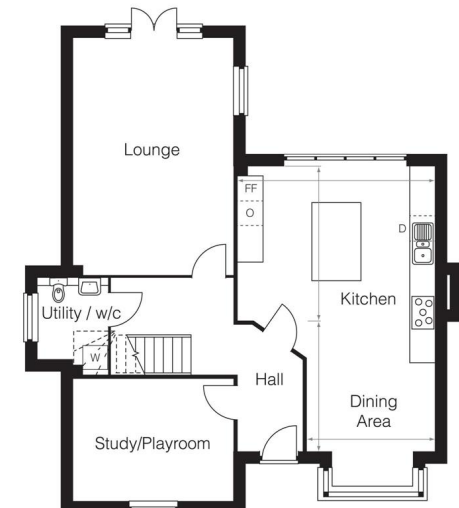
The Wilford, Liberty View, Lenham,  
Maidstone, Kent, ME17

*Wards*  
Helping you move forwards



## Main features

- Contemporary soft close Symphony Excel kitchen units with integrated appliances
- Roca sanitaryware with chrome fittings and ceramic wall tiling to bathrooms
- Open plan kitchen/diner for quality time
- Separate living room for entertaining



## Accommodation

### GROUND FLOOR

Ground Floor Hallway

Lounge: 19'1 x 12'9 (5.82m x 3.89m)

Kitchen: 15'9 x 12'3 (4.80m x 3.74m)

Dining Area: 10'6 x 10'2 (3.20m x 3.10m)

Study/Playroom: 12'9 x 9'8 (3.89m x 2.95m)

Utility/Cloakroom

### FIRST FLOOR

Bedroom 1: 13'0 x 12'9 (3.97m x 3.89m)

En-suite Shower Room

Bedroom 2: 12'9 x 9'11 (3.89m x 3.02m)

Bedroom 3: 12'2 x 10'0 (3.71m x 3.05m)

Bedroom 4: 12'6 x 9'3 (3.81m x 2.82m)

Bathroom

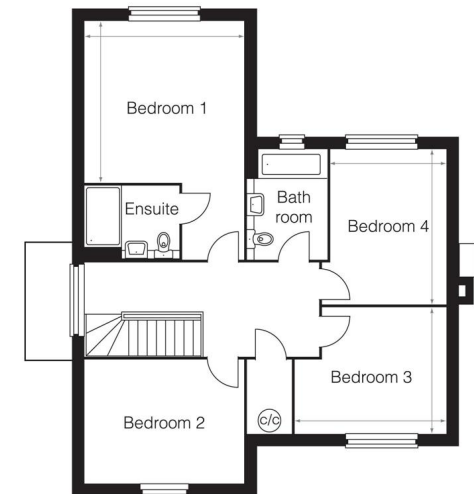
First Floor Hallway


### OUTSIDE

Front Garden

Rear Garden

Car Barn Parking



  
**LIBERTY VIEW**  
LENHAM

**Call Headcorn - 01622 890435 ■ [wardsofken.co.uk](http://wardsofken.co.uk)**

- If buying to let, the energy rating will need to be improved to at least 'E' rating before you can let the property
- Legal advice should be taken to verify fixtures/fittings, planning, alterations and/or lease details
- Appliances & services are untested, dimensions are approximate and floor plans are not to scale



12721867/20240220/JB/HS1