



Guide Price
£270,000

Leasehold

2x  1x  1x 

**Atwater Court, Lenham,
Maidstone, Kent, ME17**

Wards
Helping you move forwards



Main features

- Immaculate throughout
- Balcony overlooking stunning communal gardens
- Parking and garage en-bloc
- Recently upgraded shower room
- Great location just a short walk from Lenham

Accommodation

TOP FLOOR APARTMENT

FIRST FLOOR

Entrance Hall

Lounge/Diner: 19'2 x 14'1 (5.85m x 4.30m)

Kitchen: 9'9 x 8'0 (2.97m x 2.44m)

Bedroom 1: 13'9 x 11'3 (4.19m x 3.43m)

Bedroom 2: 10'9 x 7'11 (3.28m x 2.41m)

Shower Room

OUTSIDE

Balcony

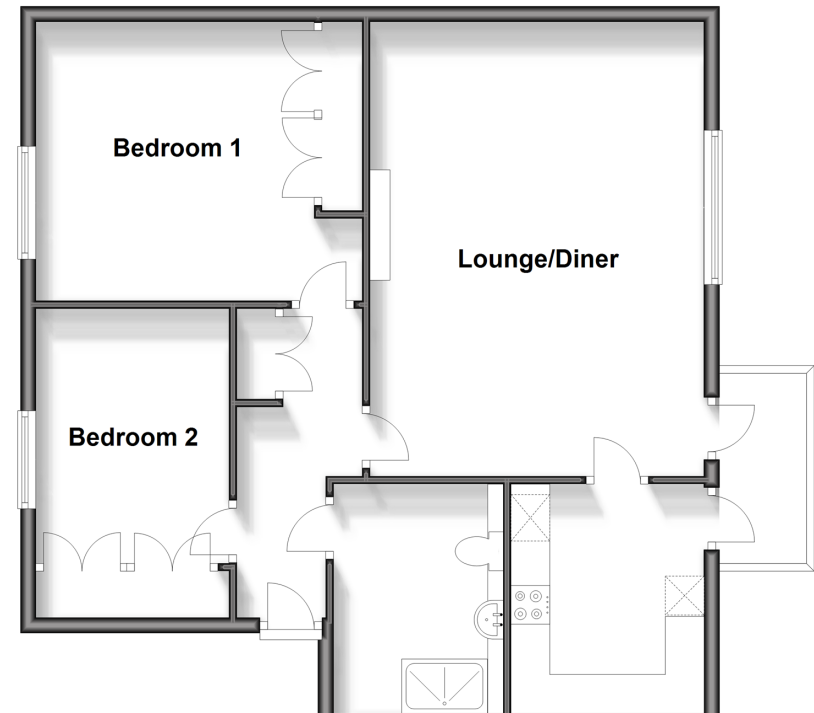
Allocated Parking

Garage En-bloc

Communal Garden

First Floor

Approx. 71.6 sq. metres (770.3 sq. feet)



Call Headcorn - 01622 890435 ■ wardsofkennt.co.uk

■ Legal advice should be taken to verify fixtures/fittings, planning, alterations and/or lease details

■ Appliances & services are untested, dimensions are approximate and floor plans are not to scale



12721881/20240416/SP/HS1