



Price
£575,000

Freehold

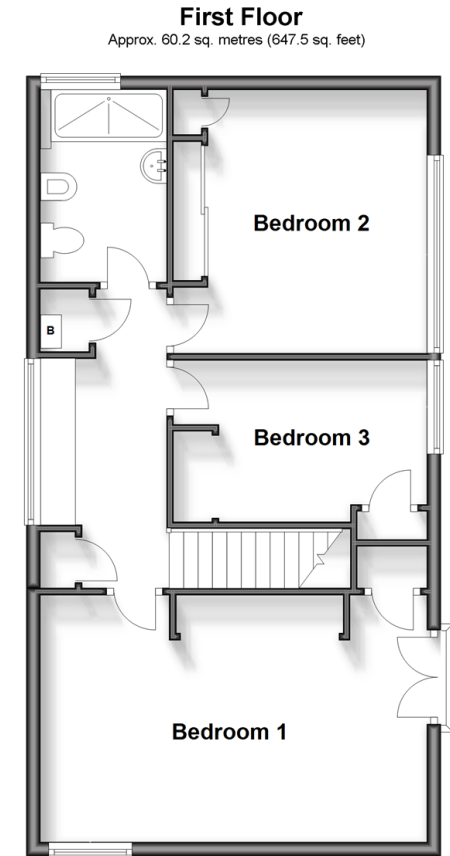
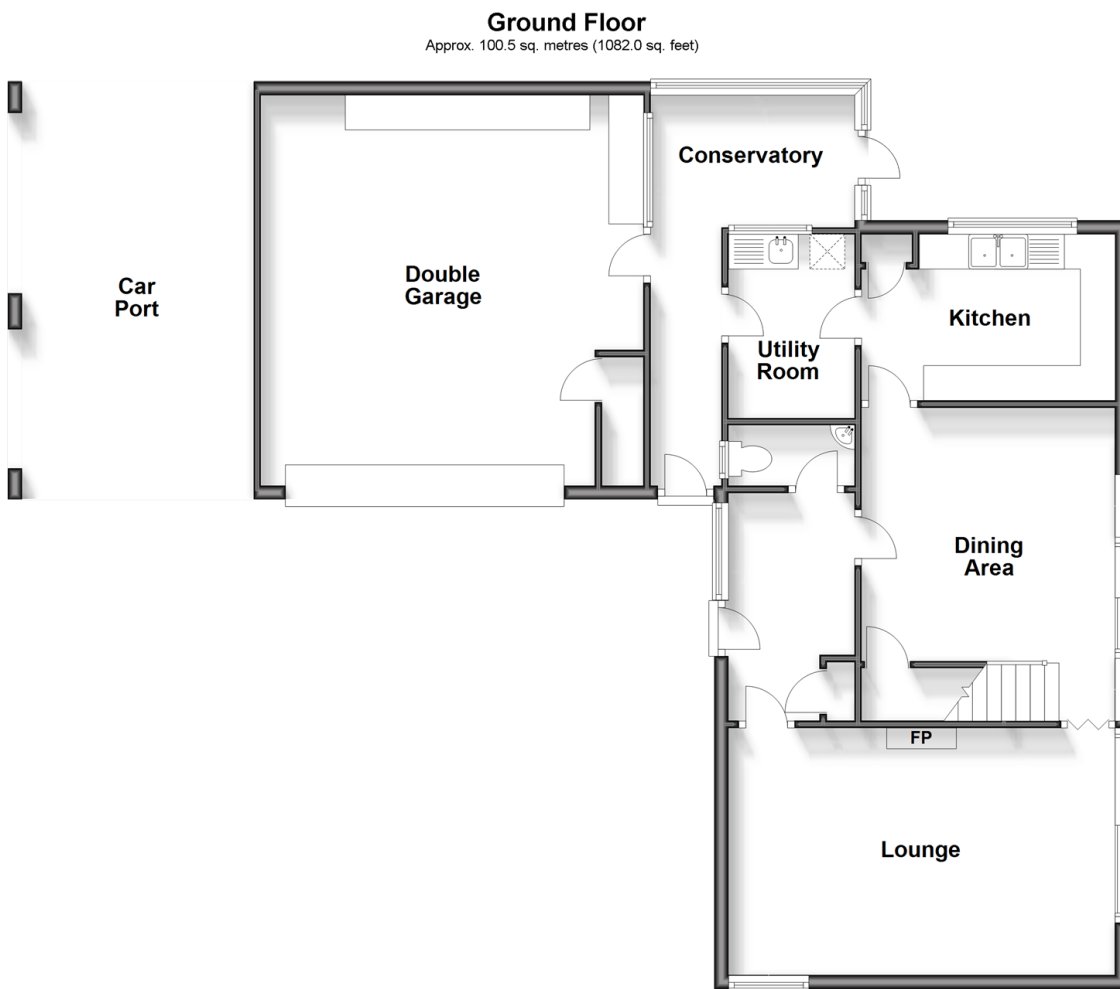
3x  1x  2x 

**Sene Park, Hythe, Kent,
CT21**

OVER 60?

Secure this property
for up to **59% less!**

Wards
Helping you move forwards



Accommodation

GROUND FLOOR

Entrance Hall
Cloakroom
Lounge: 18'2 x 11'8 (5.54m x 3.56m)
Dining Area: 12'0 x 11'11 (3.66m x 3.63m)
Kitchen: 11'9 x 7'10 (3.58m x 2.39m)
Utility Room: 8'8 x 5'10 (2.64m x 1.78m)
Lobby
Conservatory: 9'6 x 6'2 (2.90m x 1.88m)

FIRST FLOOR

Landing
Bedroom 1: 18'11 x 11'0 into fitted wardrobes (5.77m x 3.36m)
Bedroom 2: 12'3 into fitted wardrobes x 12'1 (3.74m x 3.69m)
Bedroom 3: 12'3 into fitted wardrobes x 7'6 (3.74m x 2.29m)
Shower Room: 8'6 x 6'2 (2.59m x 1.88m)

OUTSIDE

Double Garage: 18'10 x 18'0 (5.74m x 5.49m)
Car Port
Side, Front & Rear Gardens



Main features

- Spacious family home set in a sought after location
- Enjoying an elevated position with far reaching views over Hythe bay from the bedrooms
- Double garage in addition to a car port
- Large stunning gardens to the rear and side
- No onward chain



Nearest Schools

Primary Schools: Saltwood CofE Primary 0.7 miles, Hythe Bay CofE Primary 0.9 miles, St Augustine's Catholic Primary 0.9 miles

Secondary Schools: Brockhill Park Performing Arts



Transport Information

Train Stations: Sandling 1.5 miles, Folkestone West High Speed Link 2.5 miles, Westenhanger 2.8 miles



Address

Sene Park, Hythe, Kent, CT21



Directions

For directions to this property please contact us.



Call Hythe Branch 01303 267473 ■ wardsofkent.co.uk



- Legal advice should be taken to verify fixtures/fittings, planning, alterations and/or lease details
- Appliances & services are untested, dimensions are approximate and floor plans are not to scale
- Through a Homewise Home For Life Plan people aged 60+ can secure this property for up to 59% less, by purchasing a Lifetime Lease.



12819480/20231118/MARK/MARK