



Price
£380,000

Freehold

2x  1x  2x 

**Belcaire Close, Lympne,
Hythe, Kent, CT21**

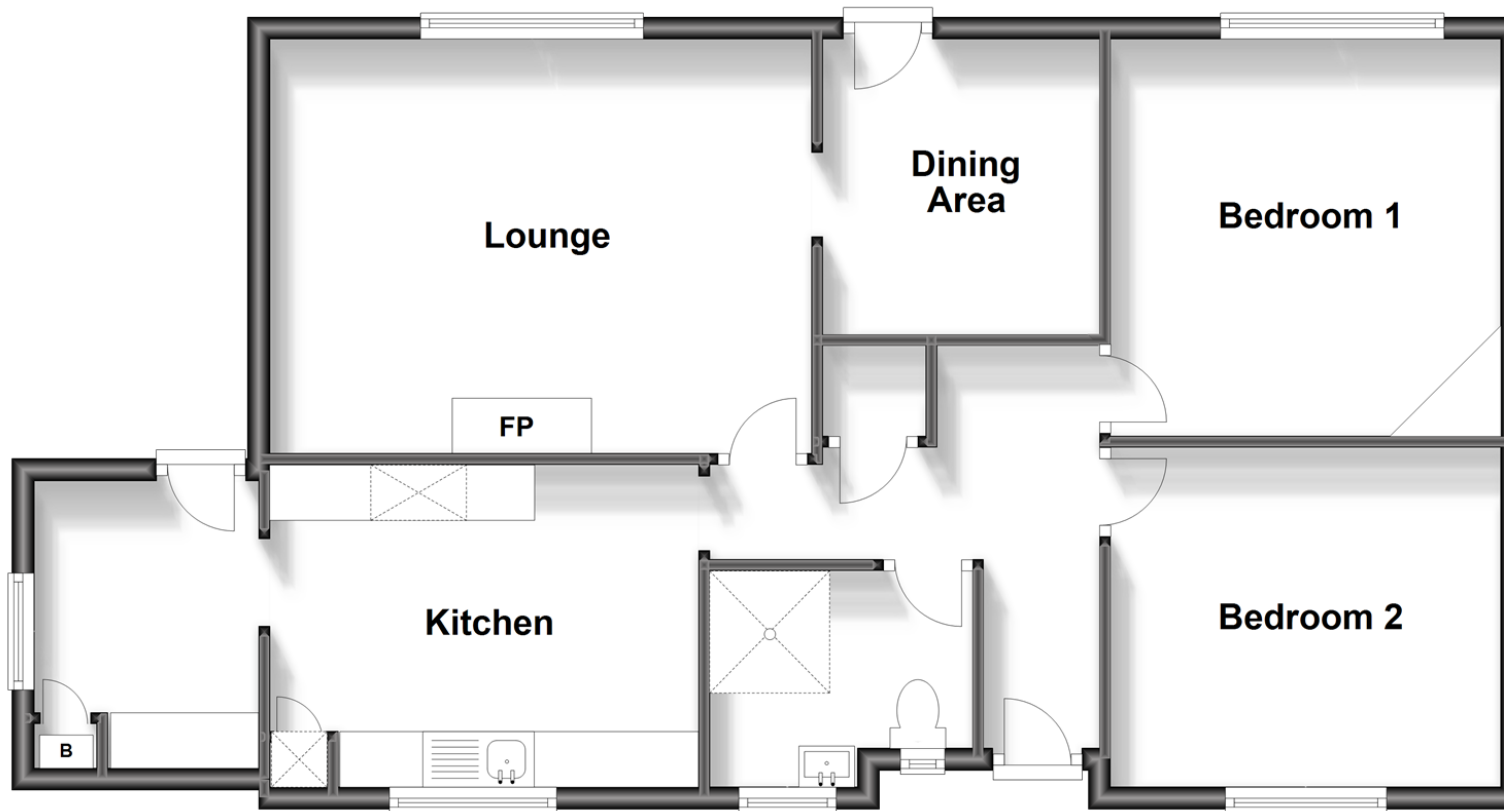
OVER 60?

Secure this property
for up to **59% less!**

Wards
Helping you move forwards

Ground Floor

Approx. 79.2 sq. metres (852.0 sq. feet)



Accommodation

GROUND FLOOR

Entrance Hall

Kitchen: 12'5 x 9'9 (3.79m x 2.97m)

Utility: 8'8 x 6'6 (2.64m x 1.98m)

Wet Room: 7'7 x 6'4 (2.31m x 1.93m)

Bedroom 1: 11'5 x 9'9 (3.48m x 2.97m)

Bedroom 2: 11'7 x 11'5 (3.53m x 3.48m)

Lounge: 15'10 x 11'8 (4.83m x 3.56m)

Dining Room: 8'8 x 8'6 (2.64m x 2.59m)

OUTSIDE

Off Road Parking

Front & Rear Gardens



Main features

- Fantastic home on a large corner plot
- Lounge and separate dining area
- Refurbished by the current owner to include new kitchen, wet room, windows and boiler
- Short drive to Westenhanger station and M20 motorway
- Short walk to popular primary school



Nearest Schools

Primary Schools: Lympne Primary 0.1 miles, Sellindge Primary 3.0 miles

Secondary Schools: Brockhill Park Performing Arts College 3.8 miles, Marsh Academy 7.1 miles



Transport Information

Train Stations: Westenhanger 1.5 miles, Sandling 3.2 miles, Folkestone West High Speed Link 7.2 miles



Address

Belcaire Close, Lympne, Hythe, Kent, CT21



Directions

For directions to this property please contact us.



Wards
Helping you move forwards

Call Hythe Branch 01303 267473 ■ wardsofkent.co.uk



- Legal advice should be taken to verify fixtures/fittings, planning, alterations and/or lease details
- Appliances & services are untested, dimensions are approximate and floor plans are not to scale
- Through a Homewise Home For Life Plan people aged 60+ can secure this property for up to 59% less, by purchasing a Lifetime Lease.



12823185/20231017/DC/MB