



**OVER 60?**

Secure this property  
for up to **59% less!**

**Price**  
**£300,000**

**Freehold**

3x  1x  1x 

**Dymchurch Road, Hythe,  
Kent, CT21**

*Wards*  
Helping you move forwards





## Main features

- **Lovely period house overlooking the canal, short walk to town**
- **Fantastic opportunity to get on the housing ladder in Hythe**
- **Large lounge and dining area**
- **Utility room, good sized bathroom**
- **Secluded sunny aspect garden**

## Accommodation

### GROUND FLOOR

#### Entrance Hall

Lounge: 13'5 (4.09m) x 11'1 (3.38m)  
narrowing to 9'10 (3.00m)

Dining Area: 12'2 (3.71m) x 10'7 (3.23m)  
narrowing to 9'7 (2.92m)

Kitchen: 10'9 x 8'1 (3.28m x 2.47m)

Utility: 5'3 x 4'1 (1.60m x 1.25m)

### FIRST FLOOR

#### Landing

Bedroom 1: 14'11 (4.55m) narrowing to  
13'9 (4.19m) x 10'9 (3.28m)

Bedroom 2: 11'2 (3.41m) x 8'9 (2.67m)  
narrowing to 7'3 (2.21m)

Bedroom 3: 8'3 x 6'6 (2.52m x 1.98m)

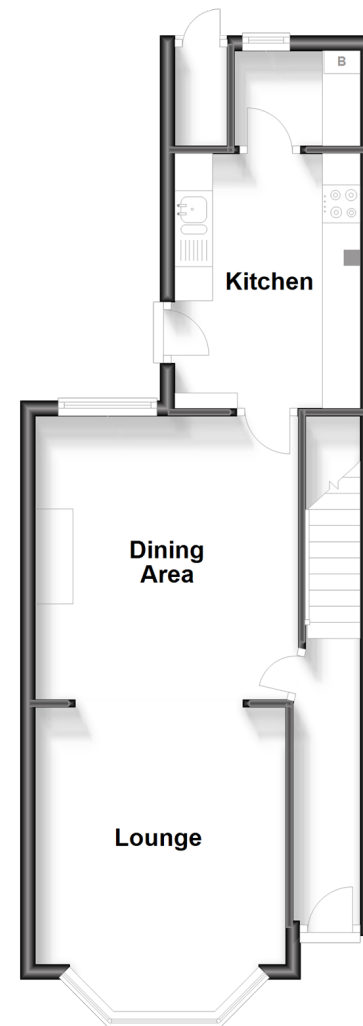
Bathroom: 8'0 x 4'9 (2.44m x 1.45m)

### OUTSIDE

#### Front & Rear Gardens

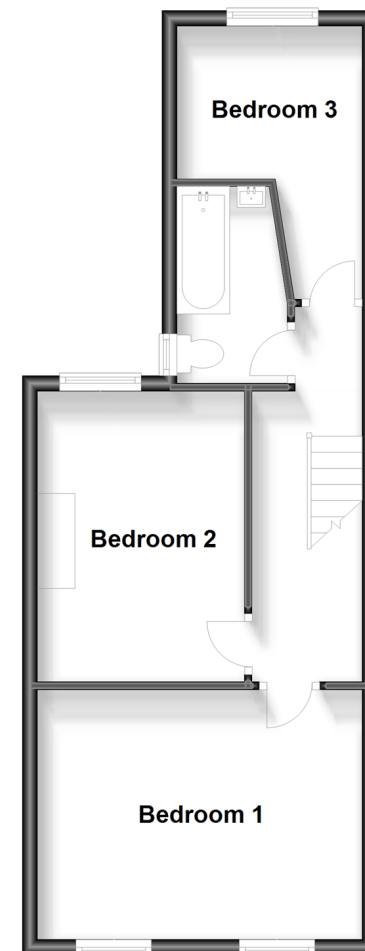
### Ground Floor

Approx. 42.8 sq. metres (460.3 sq. feet)



### First Floor

Approx. 42.9 sq. metres (461.9 sq. feet)



**Call Hythe - 01303 267473 ■ [wardsofkent.co.uk](http://wardsofkent.co.uk)**

- Legal advice should be taken to verify fixtures/fittings, planning, alterations and/or lease details
- Appliances & services are untested, dimensions are approximate and floor plans are not to scale
- Through a Homewise Home For Life Plan people aged 60+ can secure this property for up to 59% less, by purchasing a Lifetime Lease.