



Price

£360,000

**Share of
Freehold**

2x  2x  1x 

**Little Redbrooks,
London Road, Hythe,
Kent, CT21**

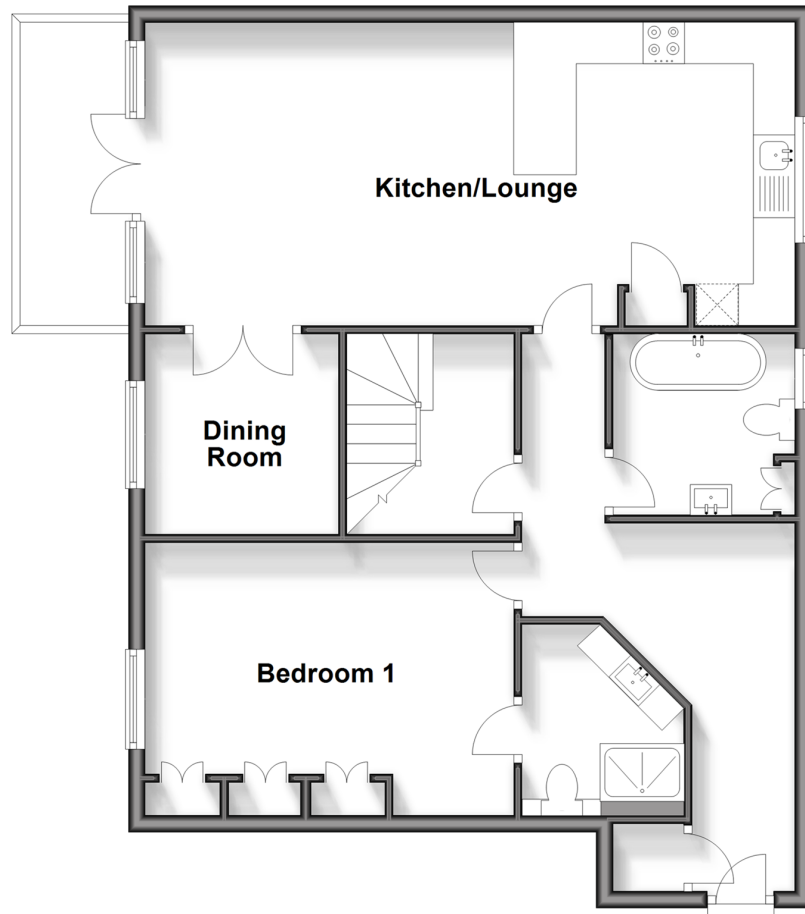
OVER 60?

Secure this property
for up to **59% less!**

Wards
Helping you move forwards

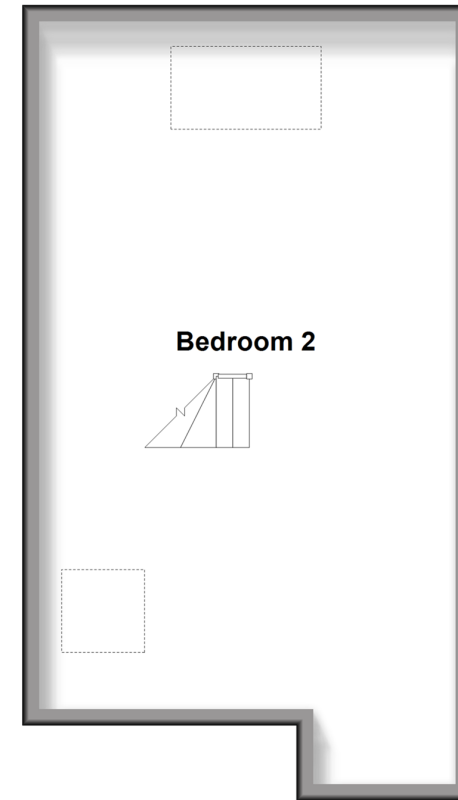
Ground Floor

Approx. 77.1 sq. metres (829.6 sq. feet)



First Floor

Approx. 43.3 sq. metres (465.5 sq. feet)



Accommodation

FIRST FLOOR

Entrance Hall

Lounge/Kitchen: 25'6 x 11'9 (7.78m x 3.58m)

Balcony: 11'1 x 5'6 (3.38m x 1.68m)

Dining Room: 7'9 x 7'8 (2.36m x 2.34m)

Bedroom 1: 14'9 x 11'1 (4.50m x 3.38m)

En-Suite Shower Room: 8'8 x 5'6 (2.64m x 1.68m)

SECOND FLOOR

Landing

Bedroom 2: 30'7 (9.33m) narrowing to 27'8 (8.44m) x 16'4 (4.98m)

Bathroom: 7'3 x 6'6 (2.21m x 1.98m)

OUTSIDE

2 Allocated Parking Spaces

Communal Garden

1/3rd Share of Shed



Main features

- Contemporary, redecorated first floor duplex apartment, no chain
- Re-fitted kitchen with granite work surfaces
- Re-fitted en-suite shower room
- Share of freehold
- 2 allocated parking spaces
- Private balcony, communal gardens
- Access to large storage shed



Nearest Schools

Primary Schools: St Augustine's Catholic Primary 0.8 miles, Saltwood CoFE Primary 1.1 miles

Secondary Schools: Brockhill Park Performing Arts College 1.5 miles, Folkestone School for Girls 4.2 miles



Transport Information

Train Stations: Sandling 1.8 miles, Westenhanger 2.4 miles, Folkestone West High Speed Link 4.9 miles



Address

Little Redbrooks, London Road, Hythe, Kent, CT21



Directions

For directions to this property please contact us.



Call Hythe Branch 01303 267473 ■ wardsofkent.co.uk



- Legal advice should be taken to verify fixtures/fittings, planning, alterations and/or lease details
- Appliances & services are untested, dimensions are approximate and floor plans are not to scale
- Through a Homewise Home For Life Plan people aged 60+ can secure this property for up to 59% less, by purchasing a Lifetime Lease.



12824039/20240213/MB/MB