



Price
£122,000

Leasehold

1x  1x  1x 

**Blythe Court, Prospect
Road, Hythe, Kent, CT21**

Wards
Helping you move forwards



Main features

- Lovely sunny aspect second floor retirement apartment
- Lift to all floors, double aspect window in bedroom
- Recently re-fitted walk-in wet room
- Lovely views towards the sea
- New oven & extractor fan, white goods, curtains & blinds included
- Communal lounge & laundry facilities

Accommodation

SECOND FLOOR

Entrance Hall

Lounge: 14'6 x 10'9 (4.42m x 3.28m)

Kitchen: 7'9 x 7'7 (2.36m x 2.31m)

Bedroom: 12'8 up to wardrobe x 9'4 (3.86m x 2.85m)

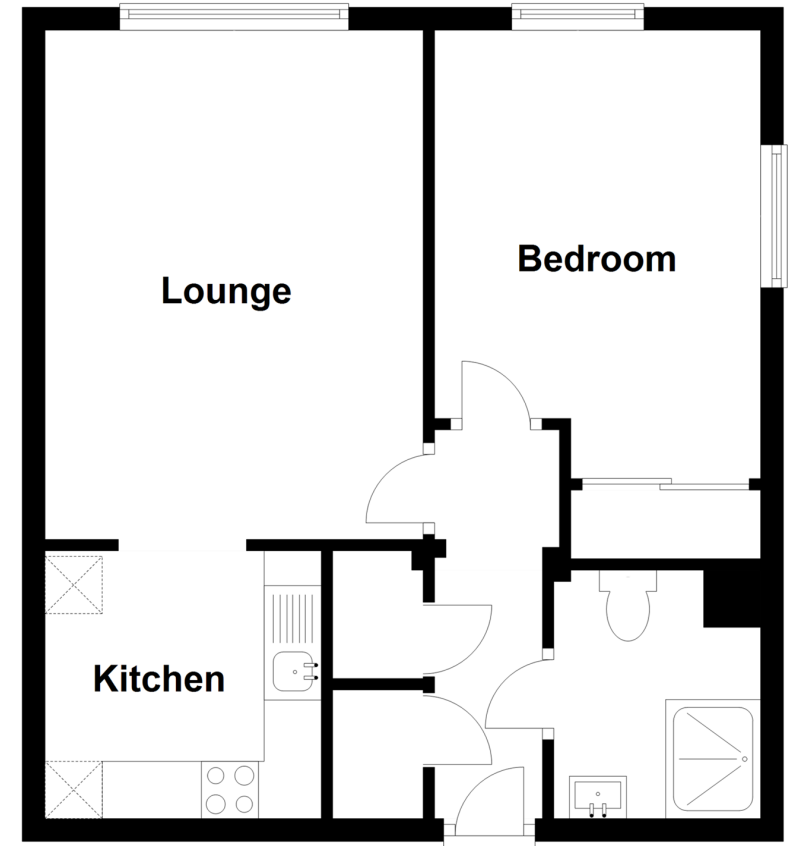
Wet Room: 6'9 x 6'8 (2.06m x 2.03m)

OUTSIDE

Resident's Car Park

Second Floor

Approx. 43.2 sq. metres (464.6 sq. feet)



Call Hythe - 01303 267473 ■ wardsofken.co.uk

- Legal advice should be taken to verify fixtures/fittings, planning, alterations and/or lease details
- Appliances & services are untested, dimensions are approximate and floor plans are not to scale