



Price
£115,000

Leasehold

1x  1x  1x 

**East Street, Hythe, Kent,
CT21**



Video Tour available

Wards
Helping you move forwards



Main features

- First floor retirement apartment
- Lovely views over Hythe hillside
- No onward chain
- Lodge manager, lifts to all floors, communal garden, car park and lounge
- Short walk to shops, seafront and the Royal Military canal

Accommodation

FIRST FLOOR

Entrance Hall

Lounge: 19'3 at widest point x 10'6 at widest point (5.87m x 3.20m)

Kitchen: 8'0 (2.44m) x 7'5 (2.26m) narrowing to 3'1 (0.94m)

Bedroom: 10'10 up to fitted wardrobes x 9'2 (3.30m x 2.80m) narrowing to 4'9 x 5'3 (1.45m x 1.60m)

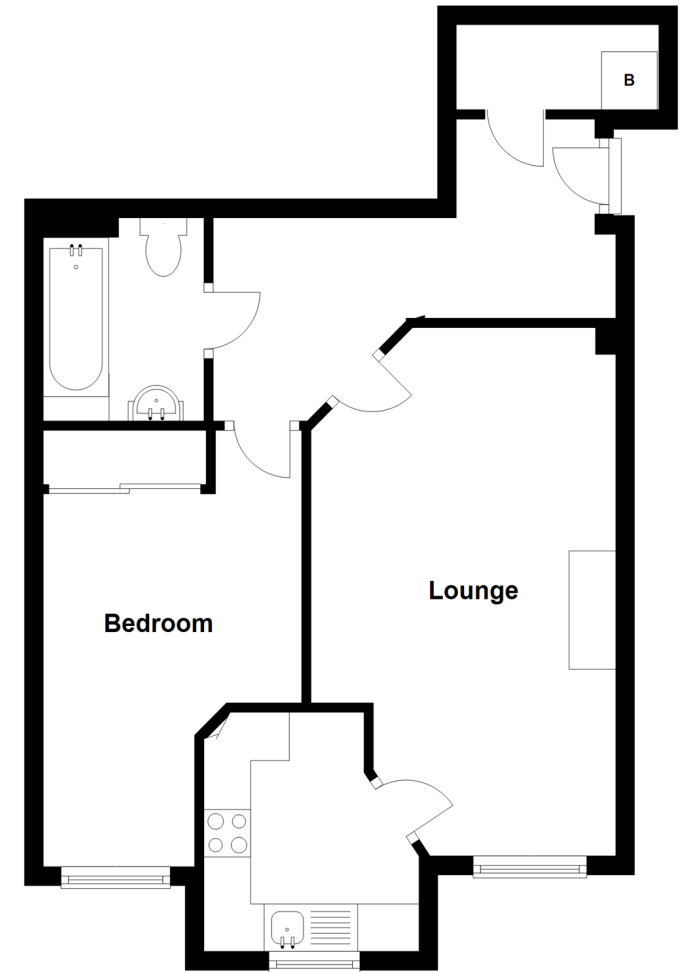
Bathroom

OUTSIDE

Communal Car Park
Communal Garden

First Floor

Approx. 47.4 sq. metres (510.1 sq. feet)



Call Hythe - 01303 267473 ■ wardsofken.co.uk

- Legal advice should be taken to verify fixtures/fittings, planning, alterations and/or lease details
- Appliances & services are untested, dimensions are approximate and floor plans are not to scale



12824070/20220722/DC/MB