



Price
£330,000

Freehold

3x  2x  1x 

**Siegfried Close,
Sellindge, Ashford,
Kent, TN25**

OVER 60?

Secure this property
for up to **59% less!**

Wards
Helping you move forwards



Main features

- **Excellent village location with several commuting links nearby**
- **New build in 2019 with an NHBC remaining until 2029**
- **Car barn and driveway**
- **Beautifully presented with neutral decor throughout**
- **Open plan kitchen/diner that leads onto the private rear garden**

Accommodation

GROUND FLOOR

Entrance Hall

Kitchen: 15'5 x 9'5 (4.70m x 2.87m)

Lounge: 13'9 x 12'1 (4.19m x 3.69m)

FIRST FLOOR

Landing

Bedroom 1: 11'3 x 9'7 (3.43m x 2.92m)

En-Suite Shower: 5'7 x 5'7 (1.70m x 1.70m)

Bedroom 2: 10'8 x 8'6 (3.25m x 2.59m)

Bedroom 3: 11'5 x 6'6 (3.48m x 1.98m)

Bathroom: 6'6 x 5'6 (1.98m x 1.68m)

OUTSIDE

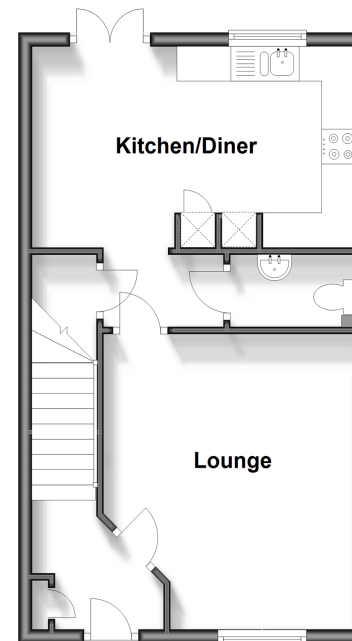
Driveway

Car Barn

Front & Rear Gardens

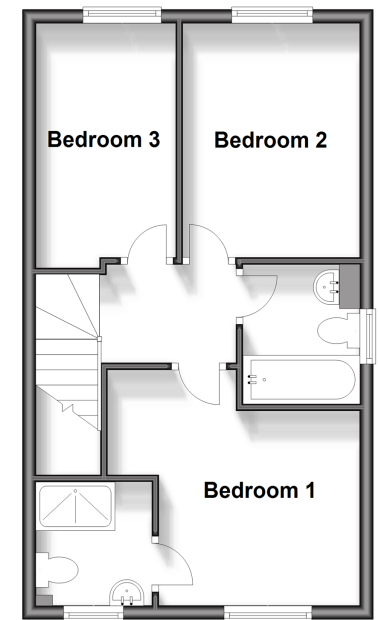
Ground Floor

Approx. 39.8 sq. metres (428.5 sq. feet)



First Floor

Approx. 39.8 sq. metres (428.5 sq. feet)



Call Hythe - 01303 267473 ■ wardsof Kent.co.uk

■ Legal advice should be taken to verify fixtures/fittings, planning, alterations and/or lease details
 ■ Through a Homewise Home For Life Plan people aged 60+ can secure this property for up to 59% less, by purchasing a Lifetime Lease.

■ Appliances & services are untested, dimensions are approximate and floor plans are not to scale



12824118/20240122/MB/MB