



**OVER 60?**

Secure this property  
for up to **59% less!**

**Price**

**£200,000**

**Leasehold**

1x  1x  1x 

**Hillside Court, Hillside  
Street, Hythe, Kent,  
CT21**

*Wards*  
Helping you move forwards





## Main features

- Secluded lower ground floor garden apartment
- Large double bedroom with stunning en-suite shower room
- Sunny aspect courtyard garden
- Open plan lounge/diner, utility cupboard
- Short walk to Hythe's beautiful High Street with many shops and cafes

## Accommodation

### LOWER GROUND FLOOR

Entrance Hall

Cloakroom

Lounge/Diner: 11'3 x 6'3 (3.43m x 1.91m) plus 14'5 x 9'2 maximum (4.40m x 2.80m)

Kitchen: 8'5 x 4'1 (2.57m x 1.25m)

Bedroom

En-Suite Shower Room: 9'2 x 4'8 (2.80m x 1.42m)

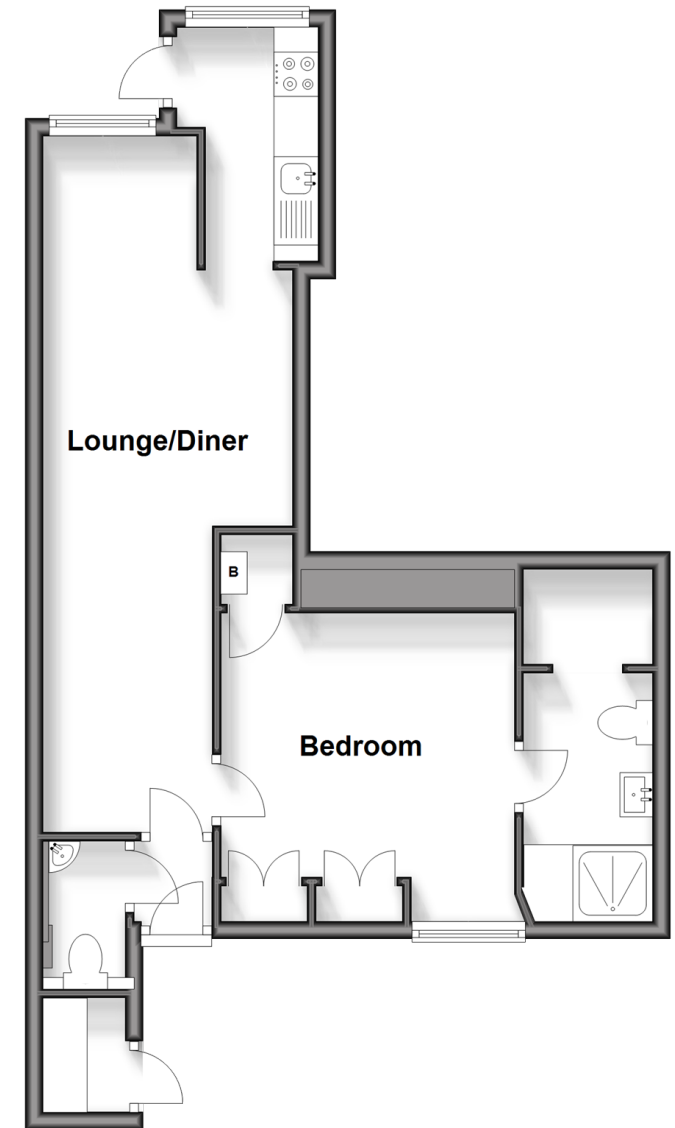
### OUTSIDE

Front Courtyard

Utility Cupboard

## Lower Ground Floor

Approx. 45.7 sq. metres (491.6 sq. feet)



**Call Hythe - 01303 267473 ■ [wardsofkent.co.uk](http://wardsofkent.co.uk)**

- Legal advice should be taken to verify fixtures/fittings, planning, alterations and/or lease details
- Appliances & services are untested, dimensions are approximate and floor plans are not to scale
- Through a Homewise Home For Life Plan people aged 60+ can secure this property for up to 59% less, by purchasing a Lifetime Lease.



12824162/20240314/MEL/MB