



Price
£350,000

Freehold

5x  1x  1x 

**Greenfields, Sellindge,
Ashford, Kent, TN25**

OVER 60?

Secure this property
for up to **59% less!**

Wards
Helping you move forwards



Main features

- Extended family home which is a partially completed project
- Re-fitted large open plan kitchen & dining area, good sized lounge
- Sunny aspect garden
- Popular village location with fantastic schools
- Easy access to Ashford, Hythe and the M20

Accommodation

GROUND FLOOR

Porch
Entrance Hall
Kitchen/Dining Area: 17'8 x 9'3 (5.39m x 2.82m)
plus 20'6 x 13'7 (6.25m x 4.14m)
Lounge: 14'9 x 9'5 (4.50m x 2.87m)
Separate Toilet

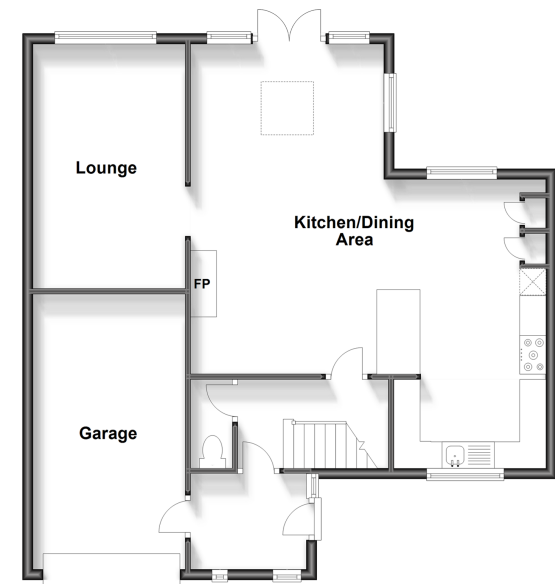
FIRST FLOOR

Landing
Bedroom 1: 14'1 x 7'4 (4.30m x 2.24m)
Bedroom 2: 12'3 x 9'6 (3.74m x 2.90m)
Bedroom 3: 12'4 x 6'5 (3.76m x 1.96m)
Bedroom 4: 9'7 x 7'9 (2.92m x 2.36m)
Bedroom 5: 9'6 x 7'9 (2.90m x 2.36m)
Bathroom: 10'10 x 7'2 (3.30m x 2.19m)
Former Bathroom: 7'8 x 4'8 (2.34m x 1.42m)

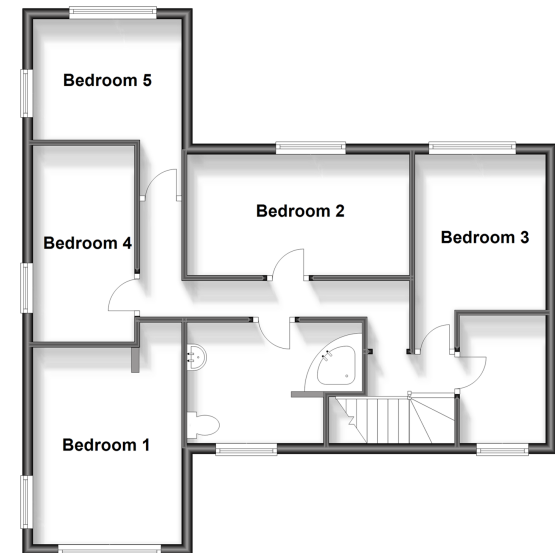
OUTSIDE

Off Road Parking
Garage: 18'1 x 9'6 (5.52m x 2.90m)
Front & Rear Gardens

Ground Floor
Approx. 80.3 sq. metres (864.7 sq. feet)



First Floor
Approx. 66.0 sq. metres (710.0 sq. feet)



Call Hythe - 01303 267473 ■ wardsofkent.co.uk

- Legal advice should be taken to verify fixtures/fittings, planning, alterations and/or lease details
- Appliances & services are untested, dimensions are approximate and floor plans are not to scale
- Through a Homewise Home For Life Plan people aged 60+ can secure this property for up to 59% less, by purchasing a Lifetime Lease.



12824181/20231020/MARK/MB