



Guide Price
£550,000

Freehold

3x  2x  1x 

**Seabrook Road, Hythe,
Kent, CT21**

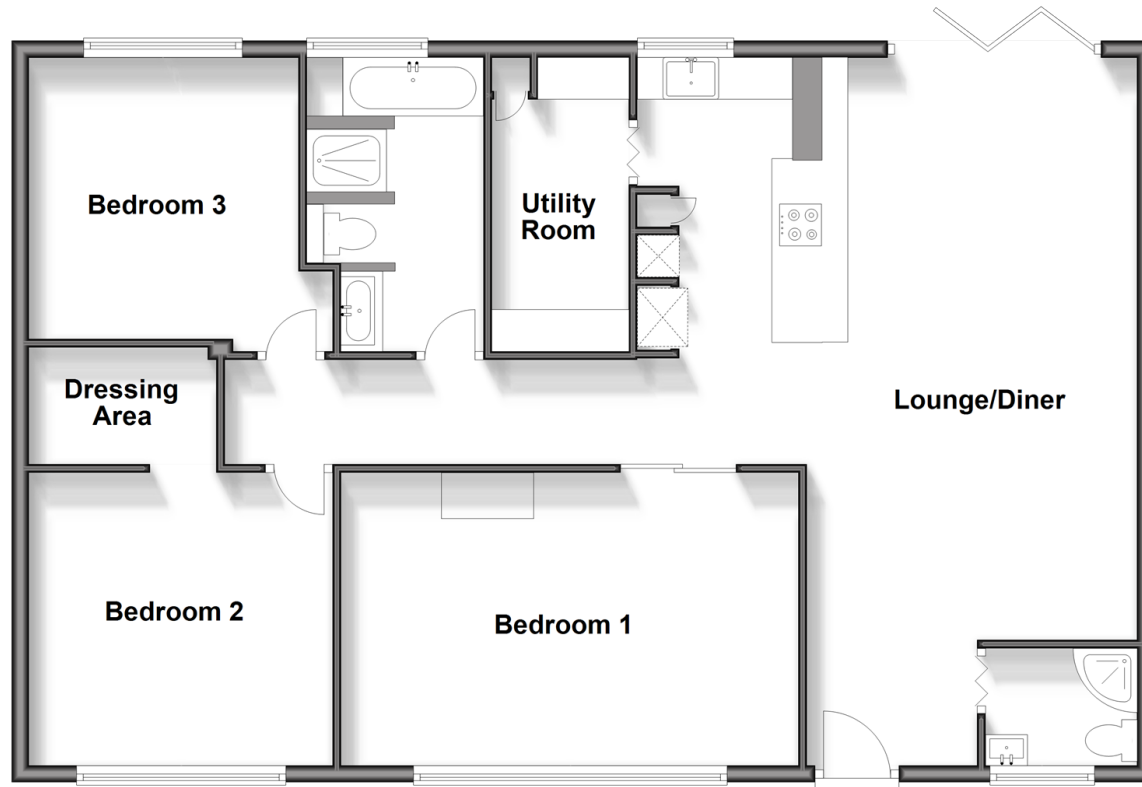
OVER 60?

Secure this property
for up to **59% less!**

Wards
Helping you move forwards

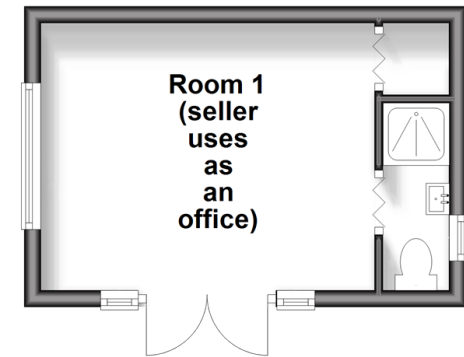
Ground Floor

Approx. 112.0 sq. metres (1205.8 sq. feet)



Outbuilding

Approx. 15.6 sq. metres (167.9 sq. feet)



Accommodation

GROUND FLOOR

Entrance Hall

Lounge/Diner: 27'6 x 12'6 (8.39m x 3.81m)

Kitchen: 14'10 x 7'2 (4.52m x 2.19m)

Utility Room: 10'5 x 5'0 (3.18m x 1.53m)

Bedroom 1: 17'9 x 11'5 (5.41m x 3.48m)

Bedroom 2: 11'9 x 11'5 (3.58m x 3.48m)

Dressing Area: 7'4 x 4'5 (2.24m x 1.35m)

Bedroom 3: 11'3 x 10'7 (3.43m x 3.23m)

Bathroom: 11'3 x 6'9 (3.43m x 2.06m)

Shower Room

OUTBUILDING

Room 1 (Used as an Office): 13'10 x 10'8 (4.22m x 3.25m)

Shower Room

OUTSIDE

Off Road Parking

Front & Rear Gardens

Shed



Main features

- This stunning refurbished home is finished to a high standard
- Short walk to the beach and canal
- Amazing open plan lounge/diner and kitchen, no onward chain
- Re-fitted bathroom with separate shower plus shower room
- Low maintenance gardens with home office and shed



Nearest Schools

Primary Schools: Seabrook C of E Primary 0.2 miles, Folkestone, St Martin's C of E Primary 1.1 miles
Secondary Schools: The Folkestone School for Girls 1.9 miles, Brockhill Park Performing Arts College 2.6 miles



Transport Information

Train Stations: Folkestone West High Speed Link 2.6 miles, Sandling 2.9 miles, Folkestone Central 3.0 miles



Address

Seabrook Road, Hythe, Kent, CT21



Directions

For directions to this property please contact us.



Wards
Helping you move forwards

Call Hythe Branch 01303 267473 ■ wardsofkent.co.uk



■ Legal advice should be taken to verify fixtures/fittings, planning, alterations and/or lease details ■ Appliances & services are untested, dimensions are approximate and floor plans are not to scale
■ Through a Homewise Home For Life Plan people aged 60+ can secure this property for up to 59% less, by purchasing a Lifetime Lease.



12824189/20240417/MB/MB