



Price

£495,000

Freehold

3x  2x  1x 

**Stone Street, Lympne,
Hythe, Kent, CT21**

OVER 60?

Secure this property
for up to **59% less!**



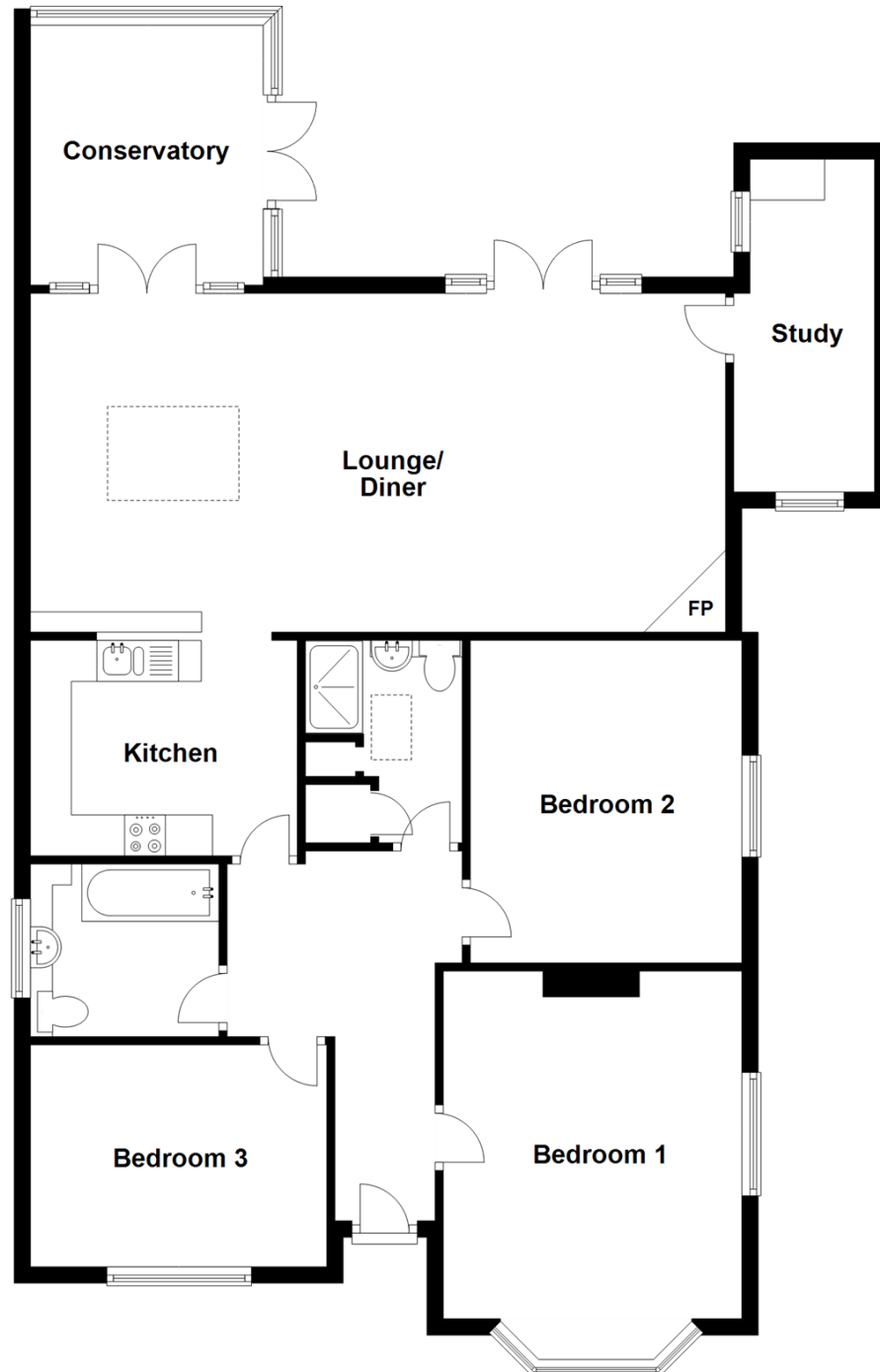
Video Tour available

Wards

Helping you move forwards

Ground Floor

Approx. 120.8 sq. metres (1300.5 sq. feet)



Accommodation

GROUND FLOOR

- Entrance Hall: 14'7 x 8'4 (4.45m x 2.54m)
- Lounge/Diner: 27'9 x 13'6 (8.46m x 4.12m)
- Kitchen: 10'8 x 8'6 (3.25m x 2.59m)
- Bedroom 1: 15'10 into bay (4.83m) narrowing to 14'4 (4.37m) x 10'10 (3.30m)
- Bedroom 2: 12'9 x 10'9 (3.89m x 3.28m)
- Bedroom 3: 11'9 x 8'8 (3.58m x 2.64m)
- Bathroom: 7'6 x 7'1 (2.29m x 2.16m)
- Shower Room: 7'9 x 5'9 (2.36m x 1.75m)
- Study: 13'3 x 5'7 (4.04m x 1.70m)
- Conservatory: 10'5 x 10'2 (3.18m x 3.10m)

OUTSIDE

- Off Road Parking
- Front & Rear Gardens



Main features

- This stunning extended home is in fantastic condition and is ready to move straight into
- Large open plan lounge/diner with lovely log burner and kitchen, perfect for entertaining
- The study will make an ideal home office
- Bathroom and shower room, all bedrooms are doubles
- Immaculate sunny aspect garden, plenty of off road parking for a large campervan



Nearest Schools

Primary Schools: Lympne Primary 0.0 miles, Saltwood CofE Primary 2.3 miles, Sellindge Primary 3.0 miles

Secondary Schools: Brockhill Park Performing Arts College 3.7 miles



Transport Information

Train Stations: Westenhanger 1.5 miles, Sandling 3.2 miles, Folkestone West High Speed Link 7.8 miles



Address

Stone Street, Lympne, Hythe, Kent, CT21



Directions

For directions to this property please contact us.



Wards
Helping you move forwards

Call Hythe Branch 01303 267473 ■ wardsofkent.co.uk



■ Legal advice should be taken to verify fixtures/fittings, planning, alterations and/or lease details ■ Appliances & services are untested, dimensions are approximate and floor plans are not to scale
■ Through a Homewise Home For Life Plan people aged 60+ can secure this property for up to 59% less, by purchasing a Lifetime Lease.



12824211/20230819/MB/DC