



Price
£650,000

Freehold

5x  2x  1x 

**Twiss Avenue, Hythe,
Kent, CT21**

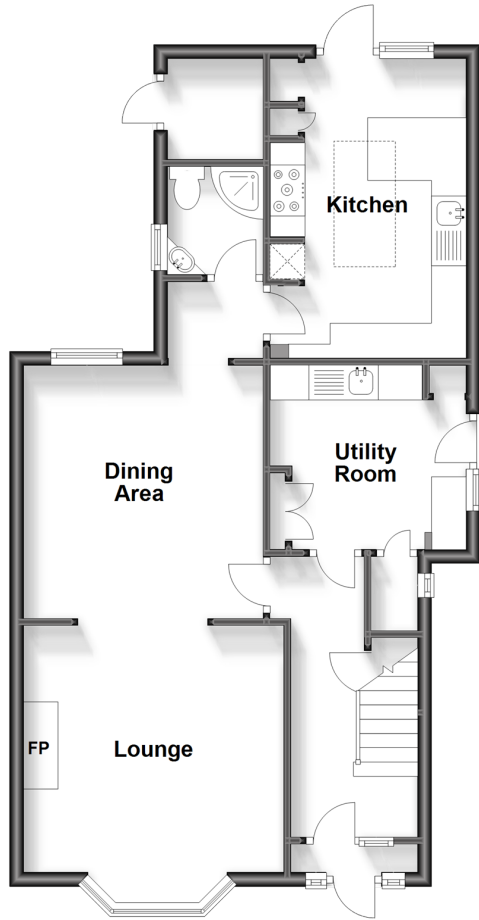
OVER 60?

Secure this property
for up to **59% less!**

Wards
Helping you move forwards

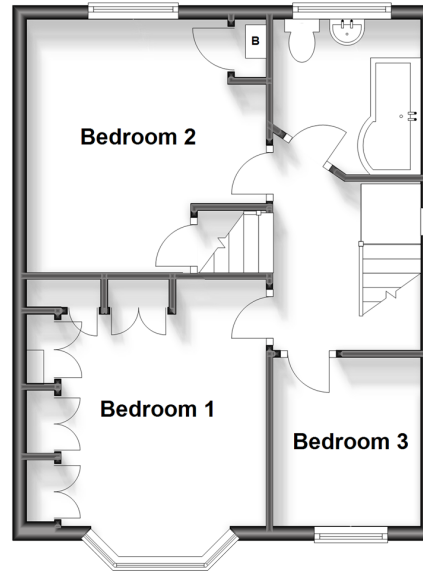
Ground Floor

Approx. 62.4 sq. metres (671.6 sq. feet)



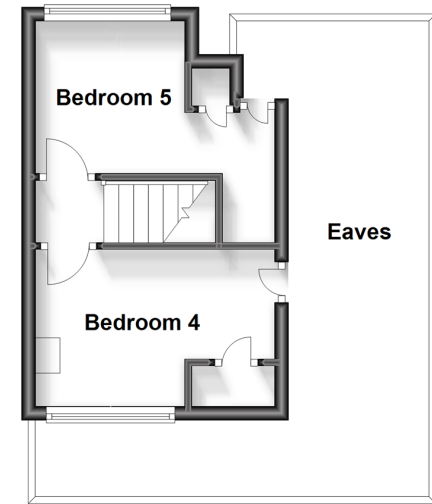
First Floor

Approx. 41.6 sq. metres (448.0 sq. feet)



Split Level Second Floor

Approx. 17.8 sq. metres (191.9 sq. feet)



Accommodation

GROUND FLOOR

Entrance Hall

Lounge: 12'6 into bay (3.81m) x 12'2 (3.71m) narrowing to 11'1 (3.38m)

Dining Area: 11'7 x 11'2 (3.53m x 3.41m)

Kitchen: 14'2 x 9'8 (4.32m x 2.95m)

Utility Room: 9'3 x 8'4 (2.82m x 2.54m)

Shower Room: 5'2 x 4'8 (1.58m x 1.42m)

FIRST FLOOR

Landing

Bedroom 1: 13'4 x 9'4 (4.07m x 2.85m)

Bedroom 2: 11'10 (3.61m) narrowing to 8'6 (2.59m) x 11'4 (3.46m)

Bedroom 3: 12'0 x 7'4 (3.66m x 2.24m)

Bathroom: 7'7 x 6'9 (2.31m x 2.06m)

SPLIT LEVEL SECOND FLOOR

Landing

Bedroom 4: 7'8 x 6'9 (2.34m x 2.06m)

Bedroom 5: 7'2 x 6'8 (2.19m x 2.03m)

OUTSIDE

Driveway

Garage

Front & Rear Gardens



Main features

- Beautiful refurbished home looking out over the canal, monocouche render, landscaped garden
- New driveway, contemporary re-fitted kitchen with skylight and recessed LED lighting
- Large re-fitted utility room, bathroom and separate shower room
- Lounge and dining area, new oak staircase, replastered walls and ceilings
- Short walk to Waitrose & town centre



Nearest Schools

Primary Schools: Hythe Bay CofE Primary 0.5 miles, Saltwood CofE Primary 0.8 miles

Secondary Schools: Brockhill Park Performing Arts College 1.2 miles, Folkestone School for Girls 2.6 miles

Transport Information

Train Stations: Sandling 1.5 miles, Westenhanger 2.8 miles, Folkestone West High Speed Link 2.8 miles

Address

Twiss Avenue, Hythe, Kent, CT21

Directions

For directions to this property please contact us.





Wards
Helping you move forwards

Call Hythe Branch 01303 267473 ■ wardsofkent.co.uk



■ Legal advice should be taken to verify fixtures/fittings, planning, alterations and/or lease details ■ Appliances & services are untested, dimensions are approximate and floor plans are not to scale
■ Through a Homewise Home For Life Plan people aged 60+ can secure this property for up to 59% less, by purchasing a Lifetime Lease.



12824220/20240325/DC/MB