



Price

£240,000

Leasehold

2x  2x  1x 

High Street, Hythe,
Kent, CT21

OVER 60?

Secure this property
for up to **59% less!**

Wards
Helping you move forwards



Main features

- Grade II listed first floor duplex apartment with no onward chain and a long lease
- Large open plan lounge/diner
- Band A council tax
- 2 double bedrooms both with en-suite bathrooms
- Communal courtyard

Accommodation

FIRST FLOOR

Entrance Hall

Lounge/Diner: 14'6 x 8'9 (4.42m x 2.67m)
plus 17'1 x 14'2 (5.21m x 4.32m)

Kitchen: 10'10 x 5'2 (3.30m x 1.58m)

SECOND FLOOR

Landing

Bedroom 1: 15'1 x 8'9 (4.60m x 2.67m)

En-Suite Bathroom: 11'1 x 5'9 (3.38m x 1.75m)

Bedroom 2: 13'8 x 12'4 (4.17m x 3.76m)

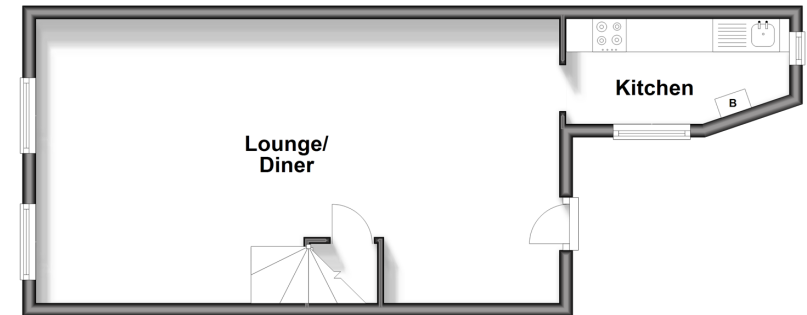
Bathroom: 6'6 x 6'3 (1.98m x 1.91m)

OUTSIDE

Communal Courtyard

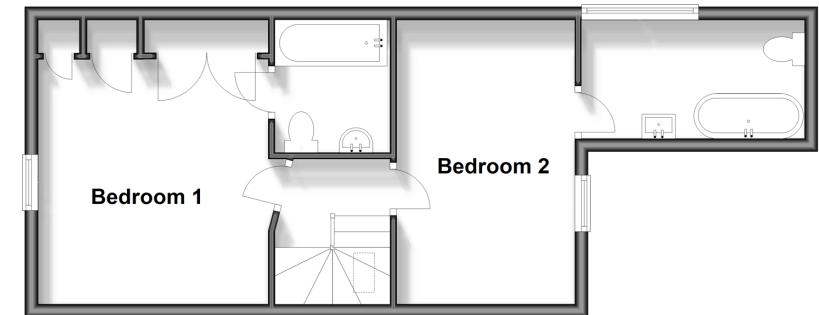
First Floor

Approx. 39.0 sq. metres (419.7 sq. feet)



Second Floor

Approx. 40.9 sq. metres (440.4 sq. feet)



Call Hythe - 01303 267473 ■ wardsofKent.co.uk

- Legal advice should be taken to verify fixtures/fittings, planning, alterations and/or lease details
- Appliances & services are untested, dimensions are approximate and floor plans are not to scale
- Through a Homewise Home For Life Plan people aged 60+ can secure this property for up to 59% less, by purchasing a Lifetime Lease.



12824262/20240212/MEL/MB