



Price
£465,000

Freehold

5x  2x  2x 

**Valley Walk, Seabrook,
Kent, CT21**

OVER 60?

Secure this property
for up to **59% less!**

Wards
Helping you move forwards



Main features

- Extended versatile home tucked away on a quiet unmade road
- Large lounge and separate dining room, generous kitchen
- 5 good sized bedrooms
- Generous walk-in wardrobe
- Parking for up to 5 cars
- Low maintenance terraced garden with sea glimpses

Accommodation

GROUND FLOOR

Porch: 7'1 x 3'7 (2.16m x 1.09m)
 Lounge: 15'8 (4.78m) x 10'9 (3.28m) narrowing to 9'8 (2.95m)
 Kitchen: 22'9 x 8'4 (6.94m x 2.54m)
 Dining Room: 19'5 x 8'7 (5.92m x 2.62m)
 Walk-In Wardrobe: 7'9 x 4'9 (2.36m x 1.45m)
 Bathroom: 11'7 (3.53m) narrowing to 7'1 (2.16m) x 6'6 (1.98m)
 Bedroom 4: 12'9 x 10'9 (3.89m x 3.28m)
 Study/Bedroom 5: 10'9 x 8'5 (3.28m x 2.57m)

FIRST FLOOR

Landing
 Bedroom 1: 14'7 x 11'3 into dormer (4.45m x 3.43m)
 Bedroom 2: 15'9 (4.80m) x 9'3 (2.82m) narrowing to 7'8 (2.34m)
 Bedroom 3: 14'4 maximum x 8'7 into dormer (4.37m x 2.62m)
 Shower Room: 5'8 x 5'7 (1.73m x 1.70m)

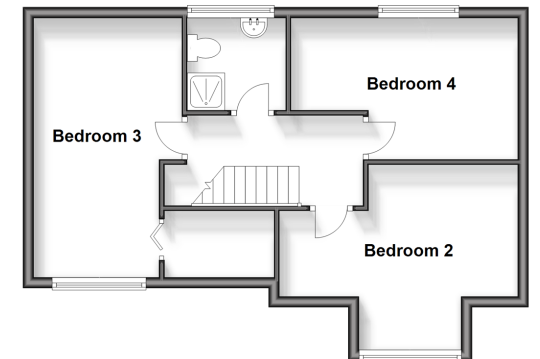
OUTSIDE

Off Road Parking
 Garage
 Rear Garden

Ground Floor
 Approx. 110.5 sq. metres (1189.0 sq. feet)



First Floor
 Approx. 47.5 sq. metres (510.9 sq. feet)



Call Hythe - 01303 267473 ■ wardsofkent.co.uk

- Legal advice should be taken to verify fixtures/fittings, planning, alterations and/or lease details
- Appliances & services are untested, dimensions are approximate and floor plans are not to scale
- Through a Homewise Home For Life Plan people aged 60+ can secure this property for up to 59% less, by purchasing a Lifetime Lease.



12824270/20240424/DC/MB