



Price

£80,000

Leasehold

1x  1x  1x 

**Homepeak House,
Bartholomew Street,
Hythe, Kent, CT21**



Video Tour available

Wards
Helping you move forwards



Main features

- Lovely first floor retirement apartment for over 60s with its own private patio & no onward chain
- Direct access to the beautiful communal gardens
- Communal laundry covered by service charge
- Communal car park, lift to all floors
- Guest suite for visitors

Accommodation

FIRST FLOOR

Entrance Hall

Lounge: 15'4 x 10'3 (4.68m x 3.13m)

Kitchen: 7'3 x 5'4 (2.21m x 1.63m)

Bedroom 1: 12'1 x 8'7 (3.69m x 2.62m)

Bathroom: 6'7 x 5'4 (2.01m x 1.63m)

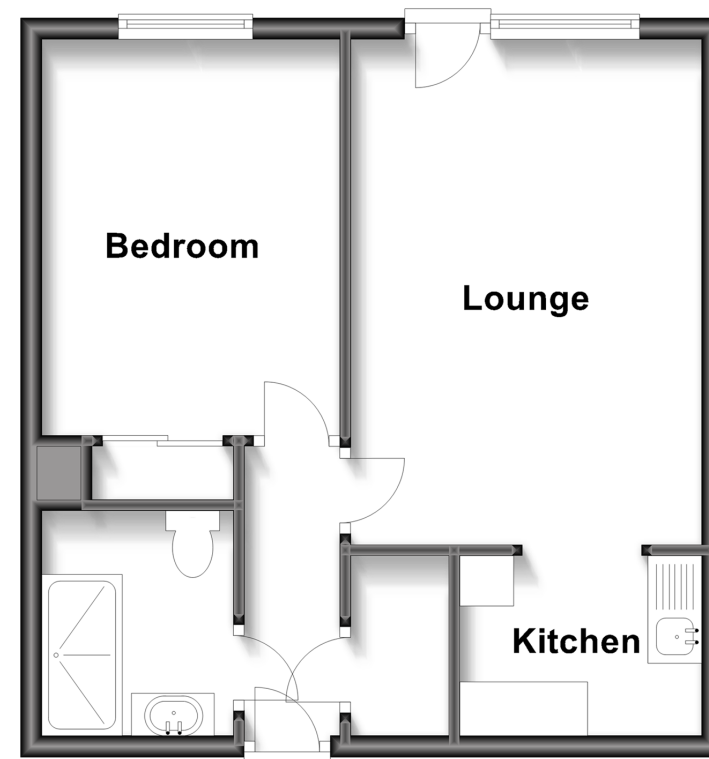
OUTSIDE

Communal Gardens

Communal Car Park

First Floor

Approx. 39.7 sq. metres (426.8 sq. feet)



Call Hythe - 01303 267473 ■ wardsof Kent.co.uk

- Legal advice should be taken to verify fixtures/fittings, planning, alterations and/or lease details
- Appliances & services are untested, dimensions are approximate and floor plans are not to scale



12824284/20230215/DC/MB