



Price
£550,000

Freehold

3x  1x  1x 

**Blackhouse Hill, Hythe,
Kent, CT21**

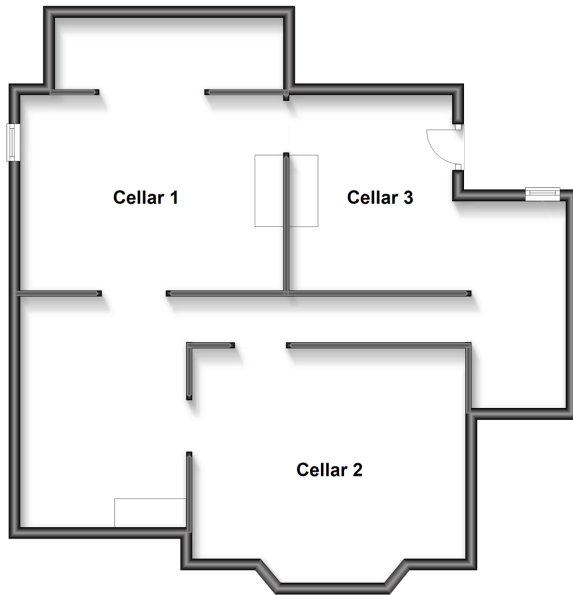
OVER 60?

Secure this property
for up to **59% less!**

Wards
Helping you move forwards

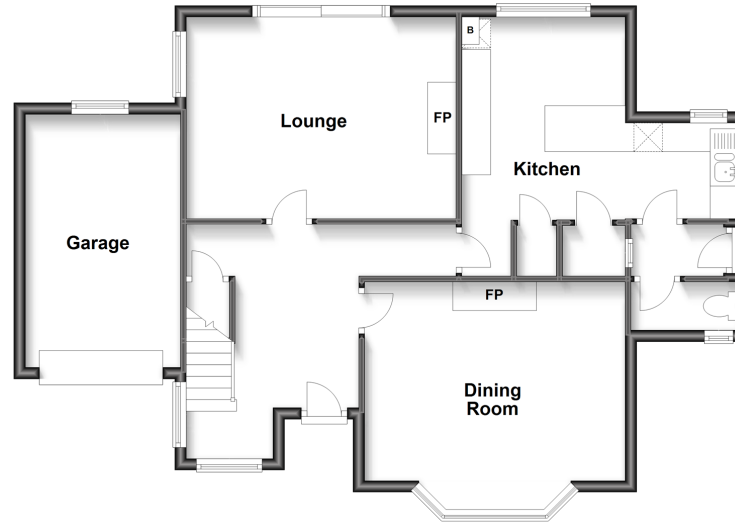
Basement

Approx. 73.6 sq. metres (791.7 sq. feet)



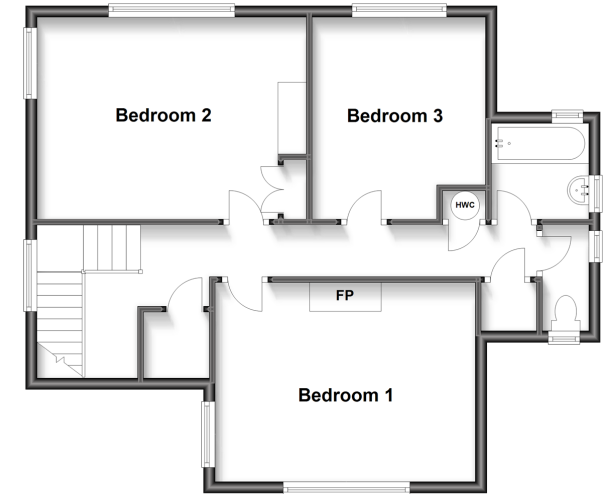
Ground Floor

Approx. 79.1 sq. metres (851.3 sq. feet)



First Floor

Approx. 63.9 sq. metres (687.5 sq. feet)



Accommodation

GROUND FLOOR

Entrance Hall
Dining Room: 14'9 x 12'5 (4.50m x 3.79m)
Lounge: 14'8 x 14'2 (4.47m x 4.32m)
Kitchen: 16'4 (4.98m) x 10'1 (3.08m)
narrowing to 5'6 (1.68m)
Separate Toilet

BASEMENT

Cellar 1: 14'2 x 11'3 (4.32m x 3.43m)
Cellar 2: 15'8 x 12'1 (4.78m x 3.69m)
Cellar 3: 13'5 x 11'2 (4.09m x 3.41m)

FIRST FLOOR

Landing
Bedroom 1: 15'1 (4.60m) narrowing to 10'2 (3.10m) x 11'4 (3.46m)
Bedroom 2: 14'4 x 11'5 (4.37m x 3.48m)
Bedroom 3: 11'6 x 9'9 (3.51m x 2.97m)
Bathroom: 6'1 x 5'10 (1.86m x 1.78m)
Separate Toilet

OUTSIDE

Garage & Driveway
Front & Rear Gardens



Main features

- Large period family home with lovely views and no onward chain
- Many attractive original features
- Sunny aspect garden
- Lounge and separate dining room, in need of cosmetic updating
- 3 double bedrooms and a cellar
- Short walk into Hythe



Nearest Schools

Primary Schools: Saltwood CofE Primary 1.2 miles, Hythe Bay CofE Primary 1.3 miles

Secondary Schools: Brockhill Park Performing Arts College 1.6 miles, Folkestone School for Girls 3.1 miles



Transport Information

Train Stations: Sandling 1.9 miles, Folkestone Central 3.3 miles, Folkestone West High Speed Link 4.4 miles



Address

Blackhouse Hill, Hythe, Kent, CT21



Directions

For directions to this property please contact us.



Wards
Helping you move forwards

Call Hythe Branch 01303 267473 ■ wardsofkent.co.uk



■ Legal advice should be taken to verify fixtures/fittings, planning, alterations and/or lease details ■ Appliances & services are untested, dimensions are approximate and floor plans are not to scale
■ Through a Homewise Home For Life Plan people aged 60+ can secure this property for up to 59% less, by purchasing a Lifetime Lease.



12824335/20230721/MEL/MB