



Price
£235,000

Leasehold

1x  1x  1x 

**Sun Lane, Hythe, Kent,
CT21**

OVER 60?

Secure this property
for up to **59% less!**



Video Tour available

Wards
Helping you move forwards



Main features

- **Spacious first floor apartment located in the centre of Hythe**
- **Close to local shops, bistros and the Royal Military canal**
- **Video entry phone system**
- **Dressing area/study off bedroom**
- **Allocated parking**
- **No onward chain**

Accommodation

FIRST FLOOR

Entrance Hall

Lounge: 19'5 x 13'6 (5.92m x 4.12m)

Kitchen: 12'11 x 6'9 (3.94m x 2.06m)

Bedroom: 15'0 x 12'9 (4.58m x 3.89m)

Dressing Room: 13'3 x 4'10 (4.04m x 1.47m)

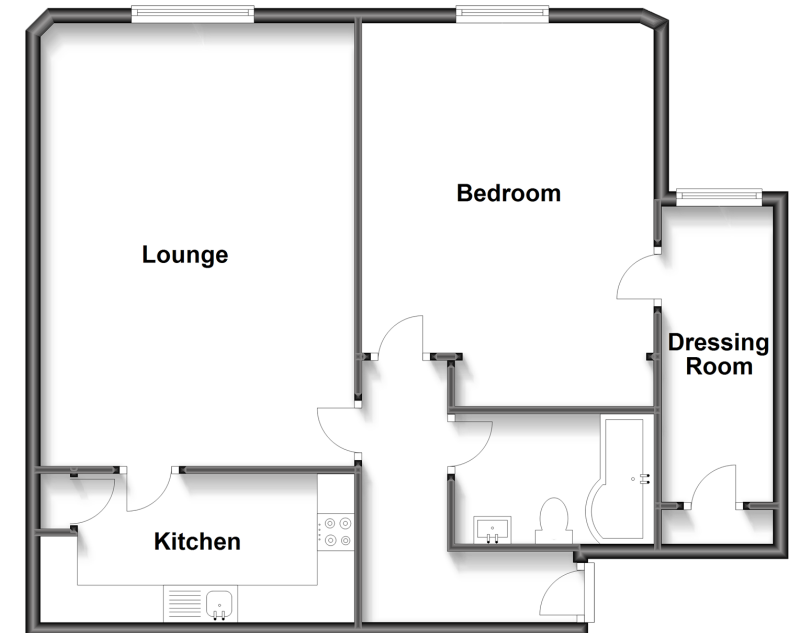
Bathroom: 8'9 x 5'10 (2.67m x 1.78m)

OUTSIDE

Allocated Parking

First Floor

Approx. 72.4 sq. metres (779.0 sq. feet)



Call Hythe - 01303 267473 ■ wardsof Kent.co.uk

- Legal advice should be taken to verify fixtures/fittings, planning, alterations and/or lease details
- Through a Homewise Home For Life Plan people aged 60+ can secure this property for up to 59% less, by purchasing a Lifetime Lease.

- Appliances & services are untested, dimensions are approximate and floor plans are not to scale