



Price
£375,000

Freehold

3x  1x  2x 

**Hampton Vale,
Seabrook, Hythe, Kent,
CT21**

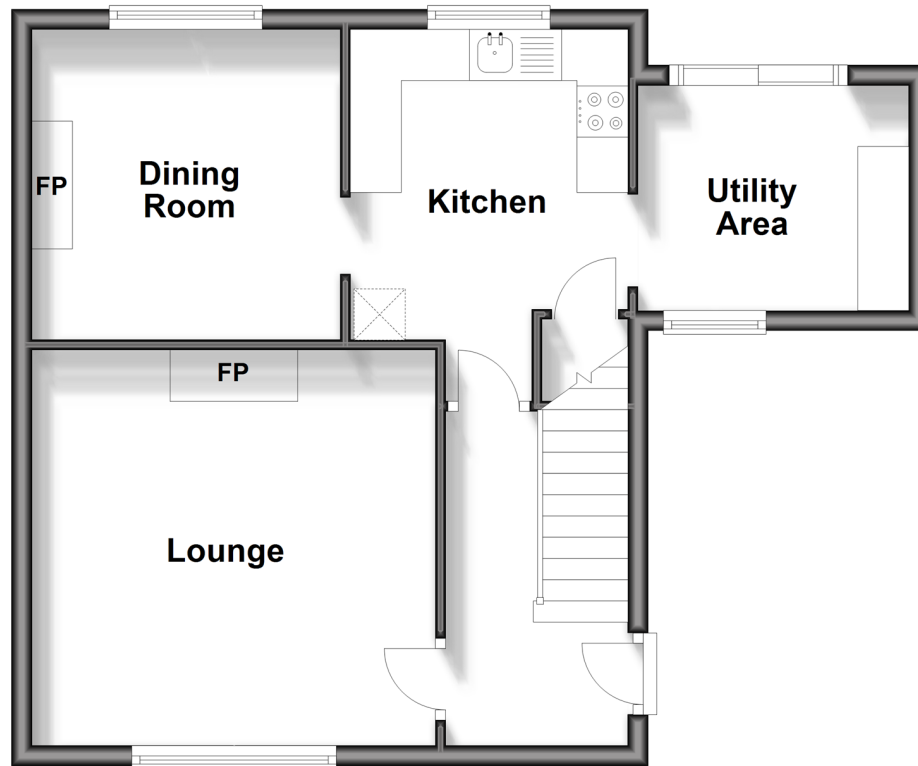
OVER 60?

Secure this property
for up to **59% less!**

Wards
Helping you move forwards

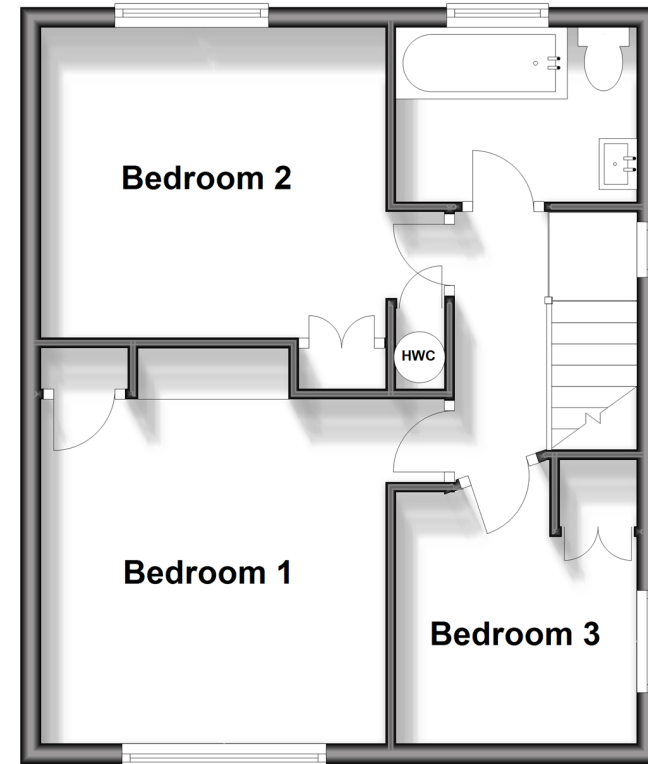
Ground Floor

Approx. 47.0 sq. metres (505.5 sq. feet)



First Floor

Approx. 40.9 sq. metres (440.3 sq. feet)



Accommodation

GROUND FLOOR

Entrance Hall

Kitchen: 10'0 x 8'9 (3.05m x 2.67m)

Utility Area: 8'7 x 7'2 (2.62m x 2.19m)

Dining Room: 10'6 x 9'9 (3.20m x 2.97m)

Lounge: 9'9 x 9'9 (2.97m x 2.97m)

FIRST FLOOR

Landing

Bedroom 1: 11'3 x 11'2 (3.43m x 3.41m)

Bedroom 2: 11'1 x 9'10 (3.38m x 3.00m)

Bedroom 3: 8'3 maximum x 7'8 (2.52m x 2.34m)

Bathroom: 7'9 x 5'7 (2.36m x 1.70m)

OUTSIDE

Off Road Parking

Front & Rear Gardens

Shed



Main features

- Stunning home backing onto open land, far reaching sea views from bedroom 1
- Beautiful secluded landscaped garden with a large shed
- Separate lounge and dining room, re-fitted bathroom, useful utility area
- Close to the beach and Royal Military canal
- Easy access to Hythe, M20 and Tesco



Nearest Schools

Primary Schools: Seabrook C of E Primary 0.5 miles, Folkestone, St Martin's C of E Primary 0.9 miles
Secondary Schools: The Folkestone School for Girls 2.2 miles, The Harvey Grammar School 2.6 miles



Transport Information

Train Stations: Folkestone West High Speed Link 2.5 miles, Folkestone Central 3.4 miles, Sandling 3.5 miles



Address

Hampton Vale, Seabrook, Hythe, Kent, CT21



Directions

For directions to this property please contact us.



Wards
Helping you move forwards

Call Hythe Branch 01303 267473 ■ wardsofkent.co.uk



■ Legal advice should be taken to verify fixtures/fittings, planning, alterations and/or lease details ■ Appliances & services are untested, dimensions are approximate and floor plans are not to scale
■ Through a Homewise Home For Life Plan people aged 60+ can secure this property for up to 59% less, by purchasing a Lifetime Lease.



12824373/20240323/MEL/MB