



OVER 60?

Secure this property
for up to **59% less!**

Price

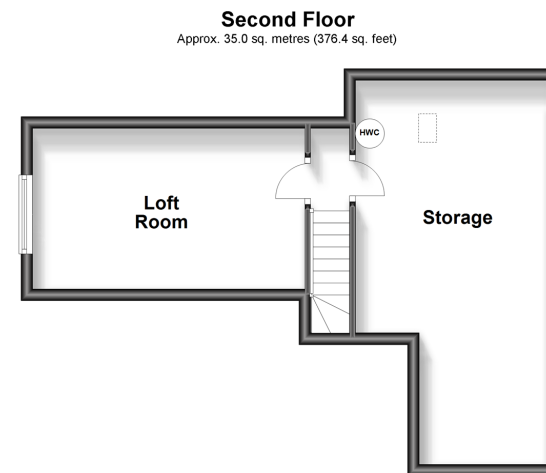
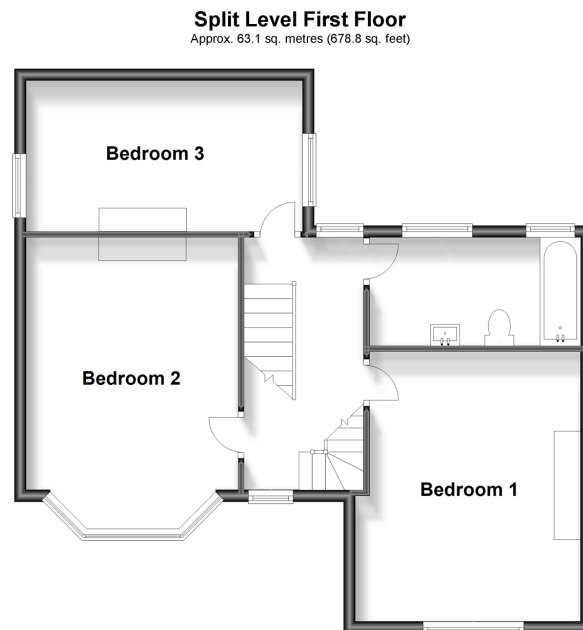
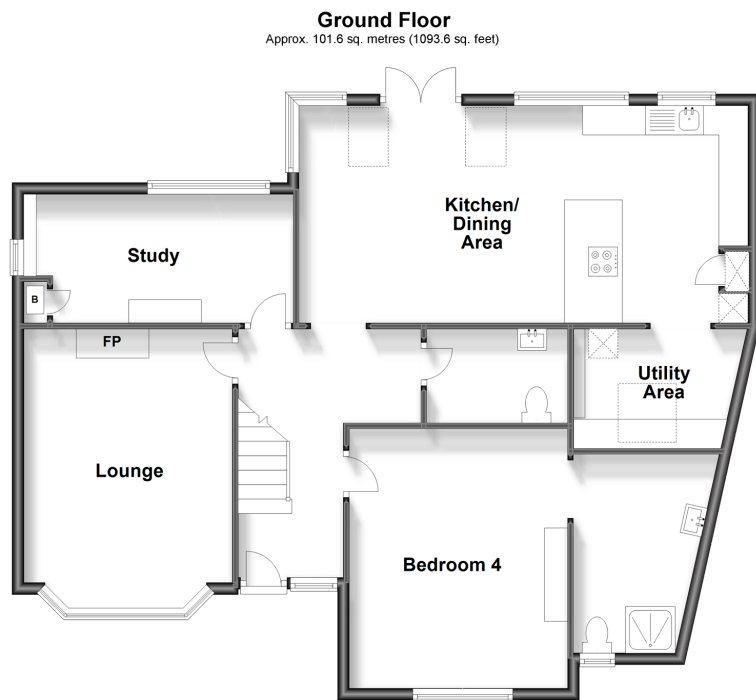
£600,000

Freehold

4x  2x  2x 

**The Green, Saltwood,
Hythe, Kent, CT21**

Wards
Helping you move forwards



Accommodation

GROUND FLOOR

Entrance Hall

Lounge: 16'6 into bay (5.03m) narrowing to 15'6 (4.73m) x 11'8 (3.56m)

Study: 15'2 into recess (4.63m) x 8'2 into recess (2.49m) narrowing to 7'1 (2.16m)

Kitchen/Dining Area: 24'2 x 12'1 (7.37m x 3.69m)

Utility Area: 7'4 x 6'5 (2.24m x 1.96m)

Bedroom 4: 14'7 (4.45m) x 12'2 into recess (3.71m) narrowing to 10'9 (3.28m)

En-Suite Wet Room: 10'7 at widest point x 6'8 at widest point (3.23m x 2.03m)

Cloakroom

SPLIT LEVEL FIRST FLOOR

Landing

Bedroom 1: 15'6 into bay x 11'9 (4.73m x 3.58m)

Bedroom 2: 14'9 (4.50m) x 12'3 into recess (3.74m) narrowing to 11'1 (3.38m)

Bedroom 3: 15'5 (4.70m) x 8'4 into recess (2.54m) narrowing to 7'2 (2.19m)

Bathroom: 11'7 x 5'2 (3.53m x 1.58m)

SECOND FLOOR

Landing

Loft Room: 15'5 x 9'0 (4.70m x 2.75m)

Storage: 10'4 x 9'7 (3.15m x 2.92m)

OUTSIDE

Off Road Parking

Front & Rear Gardens



Main features

- Beautiful period home in central Saltwood
- The flexible accommodation would be perfect for a family with someone with limited mobility
- Four of the bedrooms are doubles, one is on the ground floor with large en-suite wet room
- Stunning open plan kitchen/dining area
- Spacious hallway, large loft room
- Low maintenance sunny aspect garden



Nearest Schools

Primary Schools: Saltwood CofE Primary 0.1 miles, Hythe Bay CofE Primary 0.8 miles
Secondary Schools: Brockhill Park Performing Arts College 0.4 miles, Folkestone School for Girls 3.2 miles, The Harvey Grammar School 3.5 miles



Transport Information

Train Stations: Sandling 0.6 miles, Westenhanger 1.9 miles, Folkestone West High Speed Link 3.3 miles



Address

The Green, Saltwood, Hythe, Kent, CT21



Directions

For directions to this property please contact us.



Wards
Helping you move forwards

Call Hythe Branch 01303 267473 ■ wardsofkent.co.uk



■ Legal advice should be taken to verify fixtures/fittings, planning, alterations and/or lease details ■ Appliances & services are untested, dimensions are approximate and floor plans are not to scale
■ Through a Homewise Home For Life Plan people aged 60+ can secure this property for up to 59% less, by purchasing a Lifetime Lease.



12824390/20240102/MB/MB