



**Price**

**£290,000**

2x  2x  1x 

**Oatfield Way, Willow  
Tree Farm, Hythe, Kent,  
CT21**



**Video Tour available**

***Wards***  
Helping you move forwards



## Main features

- **Stunning park home on a sought after over 50s residential park**
- **Modern kitchen and utility area**
- **Dining area and study, spacious lounge**
- **En-suite shower room and walk-in wardrobe to bedroom 1**
- **Close to the Royal Military canal for wildlife walks**

## Accommodation

### GROUND FLOOR

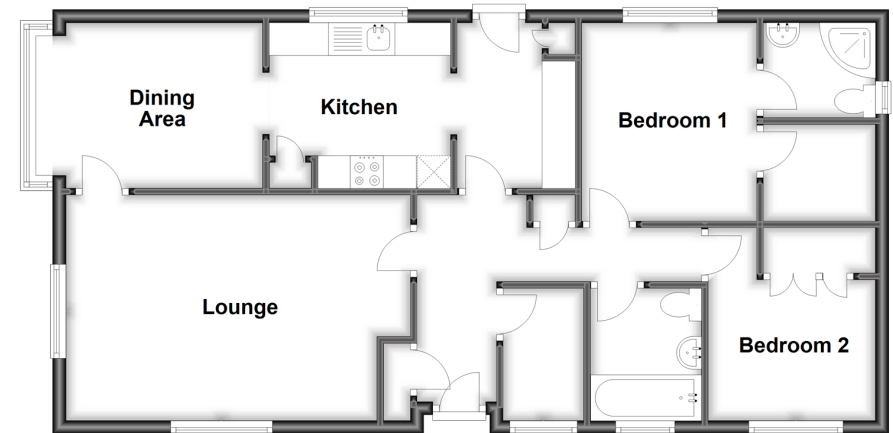
Entrance Hall  
 Study: 6'7 x 3'11 (2.01m x 1.19m)  
 Bathroom: 6'6 x 5'5 (1.98m x 1.65m)  
 Bedroom 1: 9'6 x 8'6 (2.90m x 2.59m)  
 En-Suite Shower Room: 5'4 x 4'11 (1.63m x 1.50m)  
 Walk-In Wardrobe  
 Bedroom 2: 9'6 x 8'4 (2.90m x 2.54m)  
 Lounge: 16'1 (4.91m) narrowing to 15'4 (4.68m) x 10'6 (3.20m)  
 Dining Area: 9'7 x 8'4 (2.92m x 2.54m)  
 Kitchen: 8'11 x 8'3 (2.72m x 2.52m)  
 Utility Area: 8'5 x 5'9 (2.57m x 1.75m)

### OUTSIDE

Driveway  
 Garage  
 Patio Garden

### Ground Floor

Approx. 74.1 sq. metres (797.9 sq. feet)



**Call Hythe - 01303 267473 ■ [wardsof Kent.co.uk](http://wardsof Kent.co.uk)**

- If buying to let, the energy rating will need to be improved to at least 'E' rating before you can let the property
- Appliances & services are untested, dimensions are approximate and floor plans are not to scale

■ Legal advice should be taken to verify fixtures/fittings, planning, alterations and/or lease details



12824401/20230119/MEL/MARK