



Price

£110,000

Leasehold

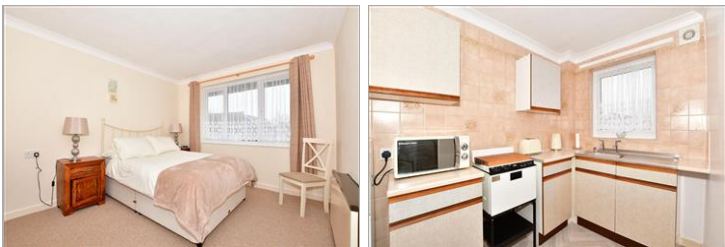
1x  1x  1x 

**Homepeak House,
Bartholomew Street,
Hythe, Kent, CT21**



Video Tour available

Wards
Helping you move forwards



Main features

- Lovely ground floor retirement apartment for the over 60s
- Originally built to be the warden's apartment, this is the only one of this style in the building
- Dressing area to bedroom
- No chain, lounge with doors opening onto the front garden
- Communal lounge and laundry room

Accommodation

GROUND FLOOR

Entrance Hall

Lounge: 15'8 x 10'7 (4.78m x 3.23m)

Bedroom: 12'6 x 9'10 (3.81m x 3.00m)

Dressing Area

Kitchen: 8'11 x 5'6 (2.72m x 1.68m)

Bathroom: 6'11 x 6'11 (2.11m x 2.11m)

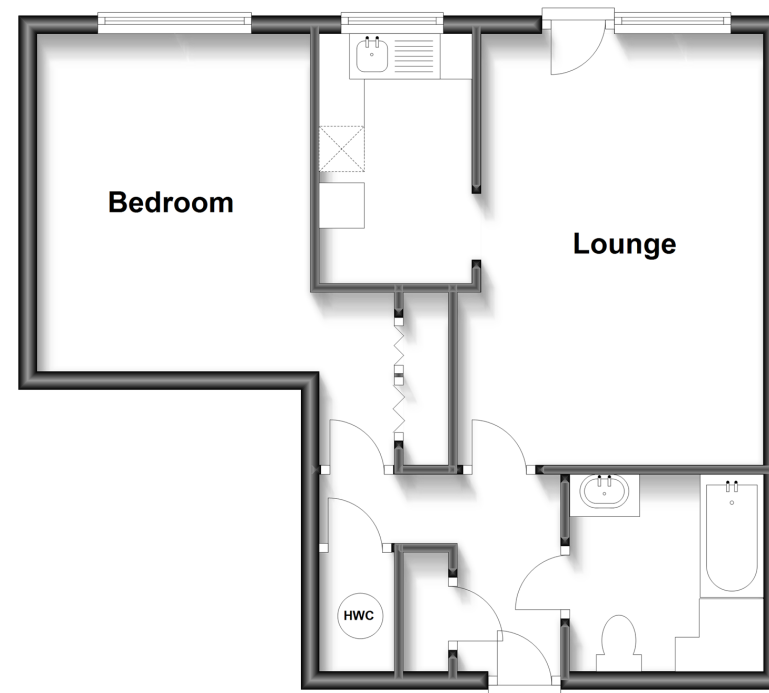
OUTSIDE

Communal Car Park

Communal Gardens

Ground Floor

Approx. 46.0 sq. metres (495.5 sq. feet)



Call Hythe - 01303 267473 ■ wardsofkent.co.uk

- Legal advice should be taken to verify fixtures/fittings, planning, alterations and/or lease details
- Appliances & services are untested, dimensions are approximate and floor plans are not to scale



12824424/20230126/MEL/MARK