



Price
£435,000

Freehold

3x  1x  1x 

**Mitcham Road,
Dymchurch, Romney
Marsh, Kent, TN29**

OVER 60?

Secure this property
for up to **59% less!**

Wards
Helping you move forwards



Main features

- Stunning & immaculately presented
- Large corner plot with a detached double garage and ample parking
- Located a short walk from the High Street and sandy beach
- Spacious lounge with dining area and modern log burner
- Modern kitchen, utility area and bathroom

Accommodation

GROUND FLOOR

Entrance Hall

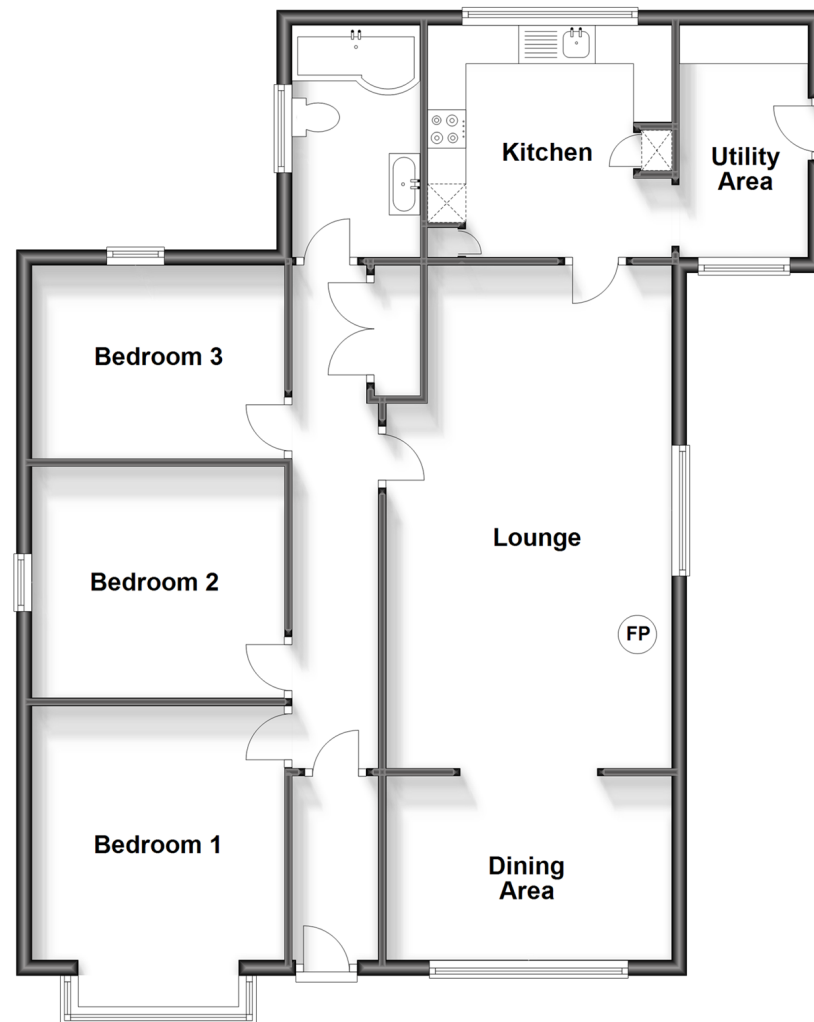
- Lounge: 21'8 x 11'9 (6.61m x 3.58m)
- Dining Area: 11'6 x 6'10 (3.51m x 2.08m)
- Kitchen: 10'0 x 9'9 (3.05m x 2.97m)
- Utility Area: 9'7 x 5'4 (2.92m x 1.63m)
- Bedroom 1: 12'7 x 10'9 (3.84m x 3.28m)
- Bedroom 2: 10'9 x 9'9 (3.28m x 2.97m)
- Bedroom 3: 10'8 x 8'2 (3.25m x 2.49m)
- Bathroom: 10'1 x 5'5 (3.08m x 1.65m)

OUTSIDE

- Driveway
- Double Garage
- Front & Rear Gardens
- Storage Shed
- Summer House
- Log Store

Ground Floor

Approx. 97.2 sq. metres (1045.9 sq. feet)



Call Hythe - 01303 267473 ■ wardsofkent.co.uk

- Legal advice should be taken to verify fixtures/fittings, planning, alterations and/or lease details
- Appliances & services are untested, dimensions are approximate and floor plans are not to scale
- Through a Homewise Home For Life Plan people aged 60+ can secure this property for up to 59% less, by purchasing a Lifetime Lease.



12824436/20230920/MEL/MARK