



Price

£90,000

Leasehold

1x  1x  1x 

**Homepeak House,
Bartholomew Street,
Hythe, Kent, CT21**

Wards
Helping you move forwards



Main features

- Comfortable second floor retirement apartment for over 60s only
- Views over communal gardens from the lounge and bedroom windows
- No onward chain, extended lease
- Communal areas include lounge, garden, laundry, resident's car park
- Convenient for town centre

Accommodation

SECOND FLOOR

Entrance Hall

Lounge: 13'4 x 10'3 (4.07m x 3.13m)

Kitchen: 7'3 x 5'4 (2.21m x 1.63m)

Bathroom: 6'7 x 5'4 (2.01m x 1.63m)

Bedroom : 12'1 x 8'7 (3.69m x 2.62m)

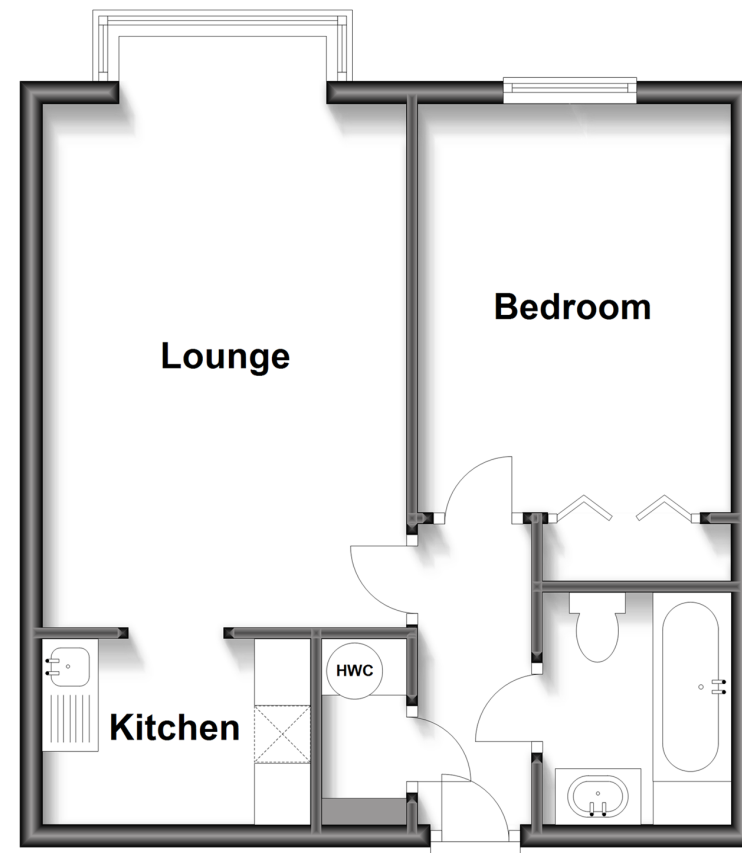
OUTSIDE

Communal Gardens

Resident's Car Park

Second Floor

Approx. 40.0 sq. metres (430.5 sq. feet)



Call Hythe - 01303 267473 ■ wardsofkent.co.uk

- Legal advice should be taken to verify fixtures/fittings, planning, alterations and/or lease details
- Appliances & services are untested, dimensions are approximate and floor plans are not to scale



12824452/20230705/MEL/MARK