



Price
£150,000

Leasehold

2x  1x  1x 

**Homepeak House,
Bartholomew Street,
Hythe, Kent, CT21**

Wards
Helping you move forwards



Main features

- Second floor retirement apartment for the over 60s, spacious bedrooms
- Amazing views towards the sea from the bedroom, lounge and kitchen
- Communal parking, laundry room and lounge
- Bright and airy as located on the sunny side of the building
- Just off the High Street

Accommodation

SECOND FLOOR

Entrance Hall

Lounge: 17'2 (5.24m) x 13'1 (3.99m) narrowing to 10'2 (3.10m)

Kitchen: 9'2 x 5'9 (2.80m x 1.75m)

Bedroom 1: 14'1 x 9'9 (4.30m x 2.97m)

Bedroom 2: 9'8 x 8'7 (2.95m x 2.62m)

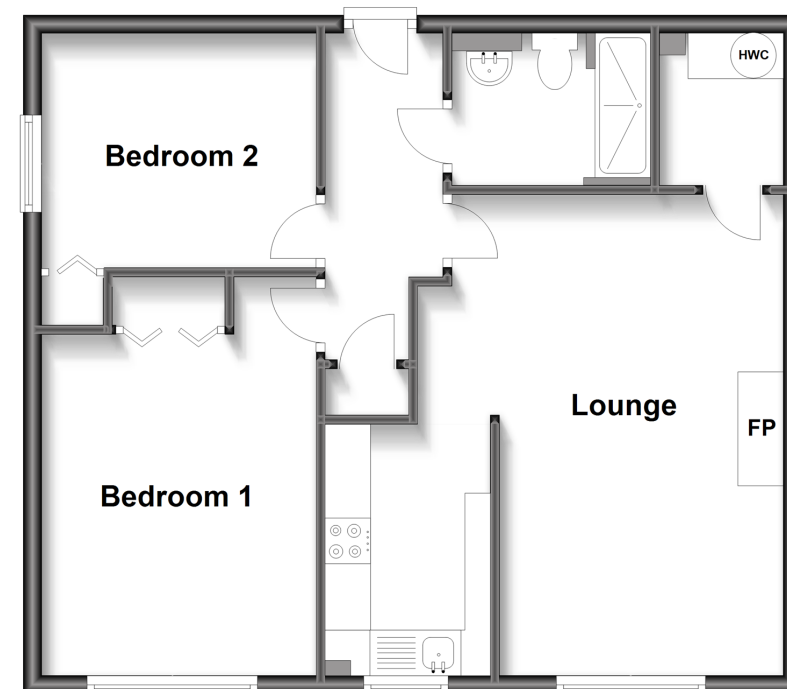
Shower Room

OUTSIDE

Communal Car Park

Second Floor

Approx. 57.5 sq. metres (618.7 sq. feet)



Call Hythe - 01303 267473 ■ wardsofken.co.uk

- Legal advice should be taken to verify fixtures/fittings, planning, alterations and/or lease details
- Appliances & services are untested, dimensions are approximate and floor plans are not to scale



12824467/20230826/MARK/MARK