



Price

£250,000

Freehold

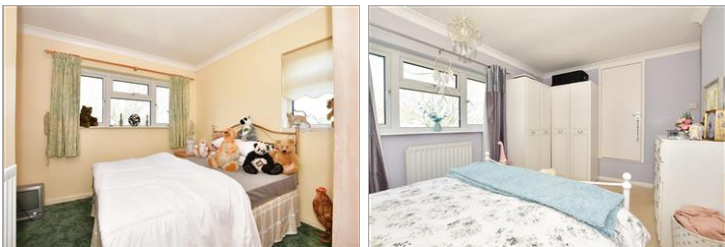
3x  1x  1x 

**The Green, Burmarsh,
Kent, TN29**

OVER 60?

Secure this property
for up to **59% less!**

Wards
Helping you move forwards



Main features

- Extended home with breath-taking views on a large plot
- Stripped out downstairs shower room ready to be re-fitted
- Large lounge with a log burner perfect for a chilly evening
- Good size kitchen, separate utility
- Large garden with views over open farmland

Accommodation

GROUND FLOOR

Entrance Hall

Lounge: 15'8 (4.78m) x 13'5 (4.09m) narrowing to 12'4 (3.76m)

Former Shower Room: 6'6 x 6'4 (1.98m x 1.93m)

Kitchen: 16'1 x 7'9 (4.91m x 2.36m)

Utility: 7'6 x 5'8 (2.29m x 1.73m)

FIRST FLOOR

Landing

Bedroom 1: 13'6 x 9'2 (4.12m x 2.80m)

Bedroom 2: 11'7 maximum (3.53m) x 10'8 (3.25m) narrowing to 8'0 (2.44m)

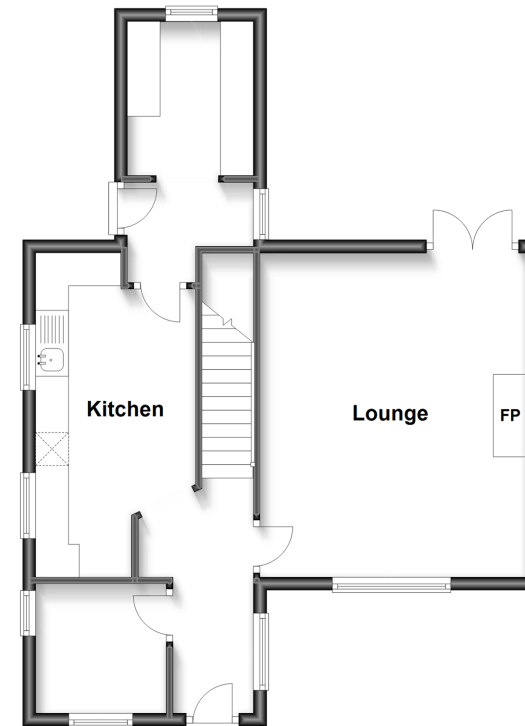
Bedroom 3: 10'7 x 6'9 (3.23m x 2.06m)

Bathroom: 7'8 x 5'0 (2.34m x 1.53m)

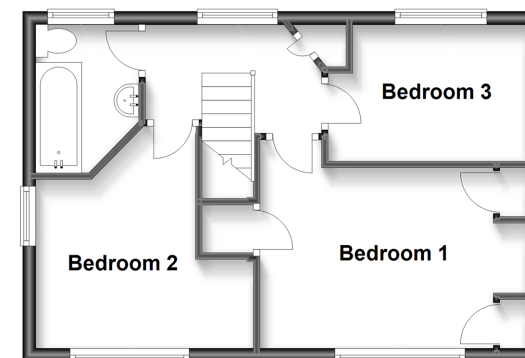
OUTSIDE

Front & Rear Gardens

Ground Floor
Approx. 50.3 sq. metres (541.8 sq. feet)



First Floor
Approx. 36.8 sq. metres (395.7 sq. feet)



Call Hythe - 01303 267473 ■ wardsofkent.co.uk

- Legal advice should be taken to verify fixtures/fittings, planning, alterations and/or lease details
- Appliances & services are untested, dimensions are approximate and floor plans are not to scale
- Through a Homewise Home For Life Plan people aged 60+ can secure this property for up to 59% less, by purchasing a Lifetime Lease.