



Price
£285,000

Freehold

1x  1x  1x 

**Hythe Road, Dymchurch,
Romney Marsh, Kent,
TN29**

OVER 60?

Secure this property
for up to **59% less!**

Wards
Helping you move forwards



Main features

- Beautiful home is a stone's throw from the beach, no onward chain
- Large sunny aspect lounge with a log burner for those chilly nights
- Re-fitted kitchen and large shower room, good size bedroom
- Handy utility porch
- Large sunny aspect garden

Accommodation

GROUND FLOOR

Lounge: 14'10 x 12'9 (4.52m x 3.89m)

Kitchen: 12'5 x 7'10 (3.79m x 2.39m)

Shower Room: 8'9 x 7'4 (2.67m x 2.24m)

Bedroom : 11'5 x 10'5 (3.48m x 3.18m)

Utility

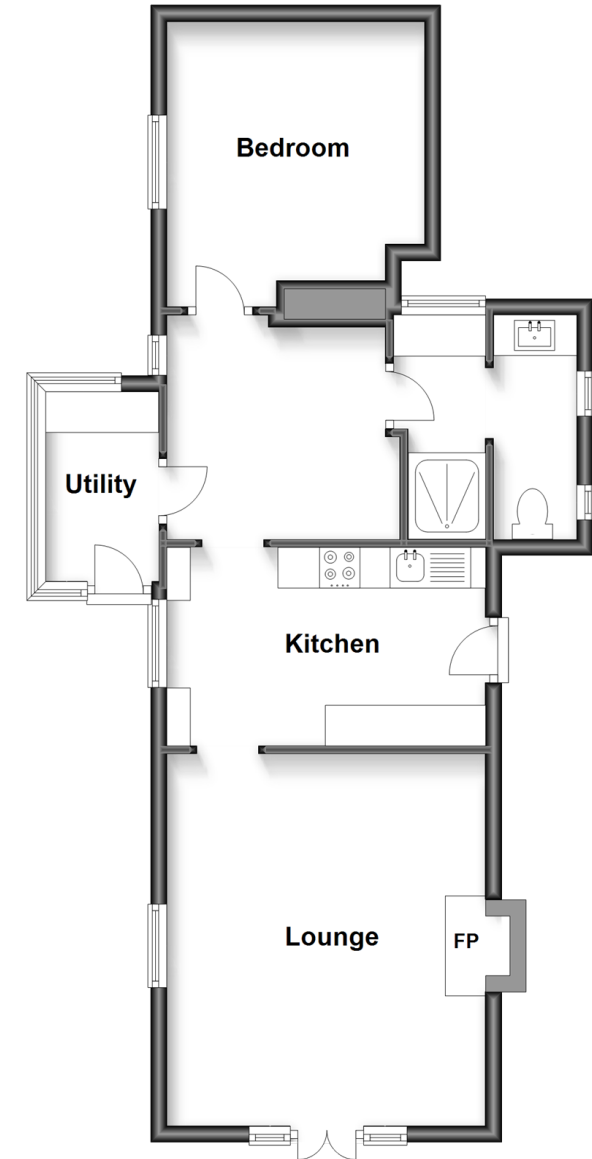
OUTSIDE

Off Road Parking

Front, Side and Rear Garden

Ground Floor

Approx. 57.1 sq. metres (614.4 sq. feet)



Call Hythe - 01303 267473 ■ wardsofkent.co.uk

- Legal advice should be taken to verify fixtures/fittings, planning, alterations and/or lease details
- Appliances & services are untested, dimensions are approximate and floor plans are not to scale
- Through a Homewise Home For Life Plan people aged 60+ can secure this property for up to 59% less, by purchasing a Lifetime Lease.



12824473/20230615/MB/MB