



Price

£170,000

Leasehold

1x  1x  1x 

**Worthington Lodge,
East Street, Hythe, Kent,
CT21**

Wards
Helping you move forwards



Main features

- Amazing second floor retirement apartment
- On the sunny side of the building with lovely views
- Modern kitchen, lovely shower room
- Ready to move straight into
- On site lodge manager, guest suite and laundry room

Accommodation

SECOND FLOOR

Entrance Hall

Lounge/Diner: 15'5 x 10'5 (4.70m x 3.18m)

Kitchen: 8'1 x 7'6 (2.47m x 2.29m)

Bedroom : 13'9 (4.19m) x 9'3 (2.82m) narrowing to 5'2 (1.58m)

Bathroom: 6'9 x 5'6 (2.06m x 1.68m)

Cupboard: 7'6 x 3'1 (2.29m x 0.94m)

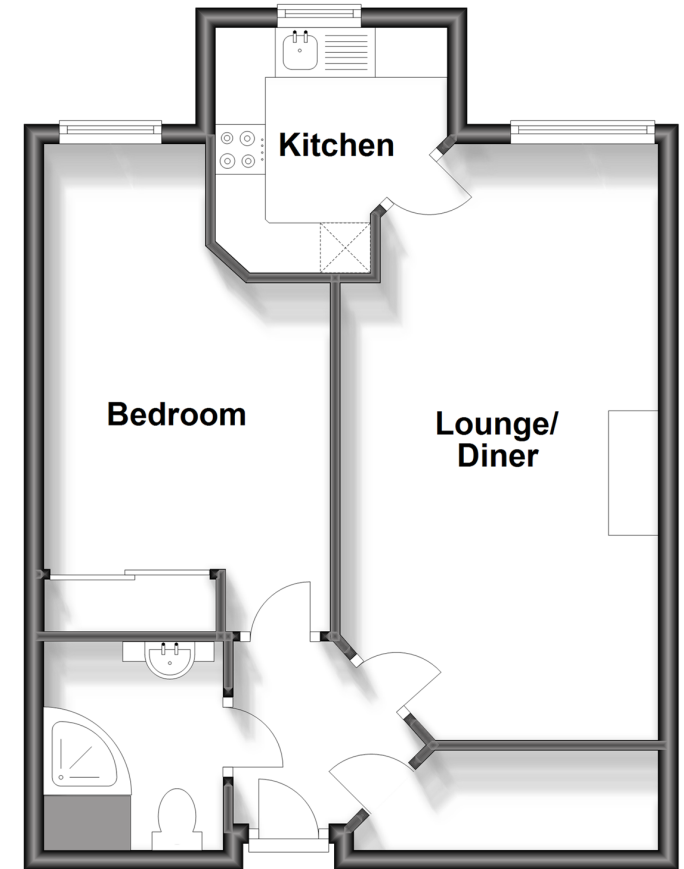
OUTSIDE

Communal Car Park

Communal Garden

Second Floor

Approx. 45.9 sq. metres (494.3 sq. feet)



Call Hythe - 01303 267473 ■ wardsofkent.co.uk

- Legal advice should be taken to verify fixtures/fittings, planning, alterations and/or lease details
- Appliances & services are untested, dimensions are approximate and floor plans are not to scale



12824508/20231018/MB/MB