



**Price**

**£75,000**

**Leasehold**

1x  1x  1x 

**Homepeak House,  
Bartholomew Street,  
Hythe, Kent, CT21**

*Wards*  
Helping you move forwards





## Main features

- **Second floor retirement apartment in sought after complex exclusively for the over 60s**
- **Communal areas including lounge, gardens, laundry room and parking**
- **Close to the High Street and convenient for local shops and cafes**
- **Offered chain free**
- **Close to the canal for beautiful walks**

## Accommodation

### SECOND FLOOR

Entrance Hall

Lounge: 14'4 x 11'7 (4.37m x 3.53m)

Kitchen: 7'3 x 5'11 (2.21m x 1.80m)

Bedroom: 17'6 x 8'8 (5.34m x 2.64m)

Shower Room: 6'7 x 5'9 (2.01m x 1.75m)

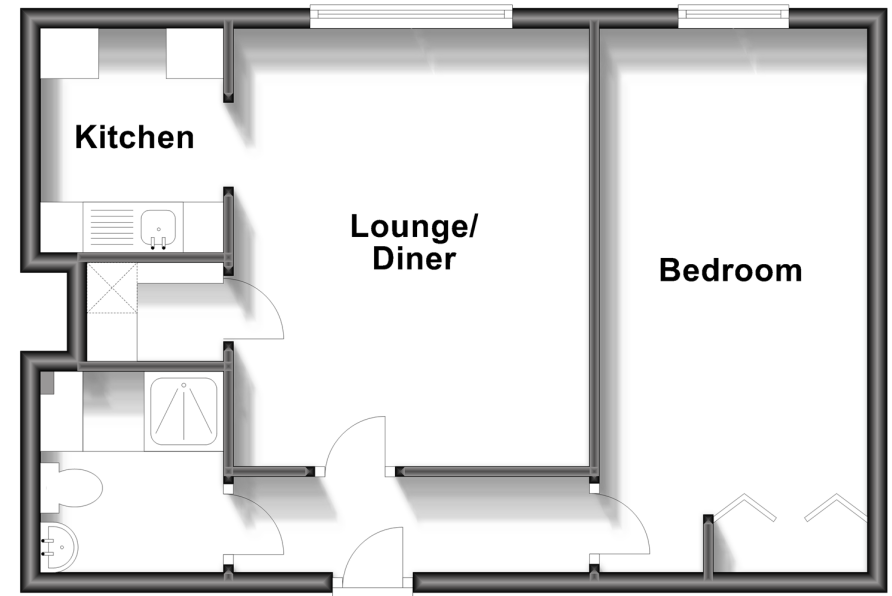
### OUTSIDE

Communal Car Park

Communal Gardens

## Second Floor

Approx. 43.3 sq. metres (466.1 sq. feet)



**Call Hythe - 01303 267473 ■ [wardsof Kent.co.uk](http://wardsof Kent.co.uk)**

■ Legal advice should be taken to verify fixtures/fittings, planning, alterations and/or lease details

■ Appliances & services are untested, dimensions are approximate and floor plans are not to scale



12824515/20231108/DC/MARK