



Price

£160,000

Leasehold

1x  1x  1x 

**Worthington Lodge,
East Street, Hythe, Kent,
CT21**

Wards
Helping you move forwards



Main features

- Amazing first floor retirement apartment, lift to all floors
- On the front the building
- Large lounge/diner with beautiful sandstone fireplace with electric fire
- Modern kitchen, lovely shower room
- Ready to move straight into
- On site lodge manager, guest suite and laundry room

Accommodation

FIRST FLOOR

Entrance Hall

Lounge/Diner: 17'3 x 10'5 (5.26m x 3.18m)

Kitchen: 7'8 x 7'1 (2.34m x 2.16m)

Bedroom : 17'3 x 9'2 (5.26m x 2.80m)

Shower Room

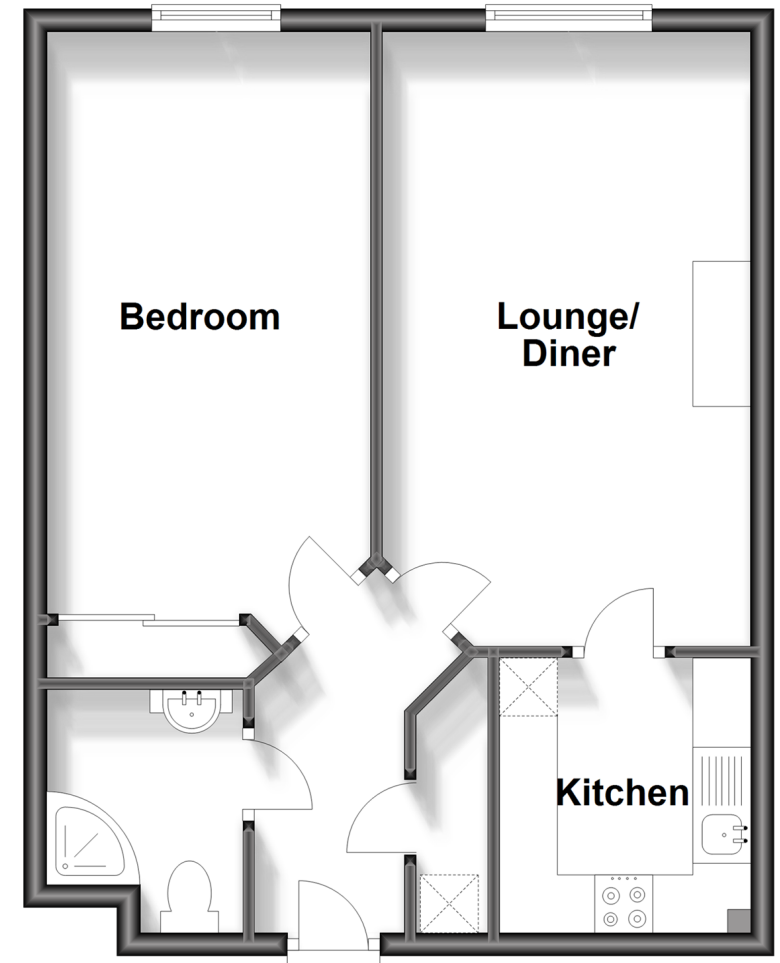
OUTSIDE

Communal Car Park

Communal Gardens

First Floor

Approx. 46.9 sq. metres (505.0 sq. feet)



Call Hythe - 01303 267473 ■ wardsof Kent.co.uk

- Legal advice should be taken to verify fixtures/fittings, planning, alterations and/or lease details
- Appliances & services are untested, dimensions are approximate and floor plans are not to scale