



**Price**  
**£325,000**

**Freehold**

3x  1x  1x 

**Redoubt Way,  
Dymchurch, Kent, TN29**

**OVER 60?**

Secure this property  
for up to **59% less!**

*Wards*  
Helping you move forwards





## Main features

- Extended home on a corner plot and it is chain free
- Large lounge and dining area
- Conservatory to relax in
- Low maintenance garden
- Double glazed and gas central heating, cavity wall insulation
- Short walk to the beach and bus stop

## Accommodation

### GROUND FLOOR

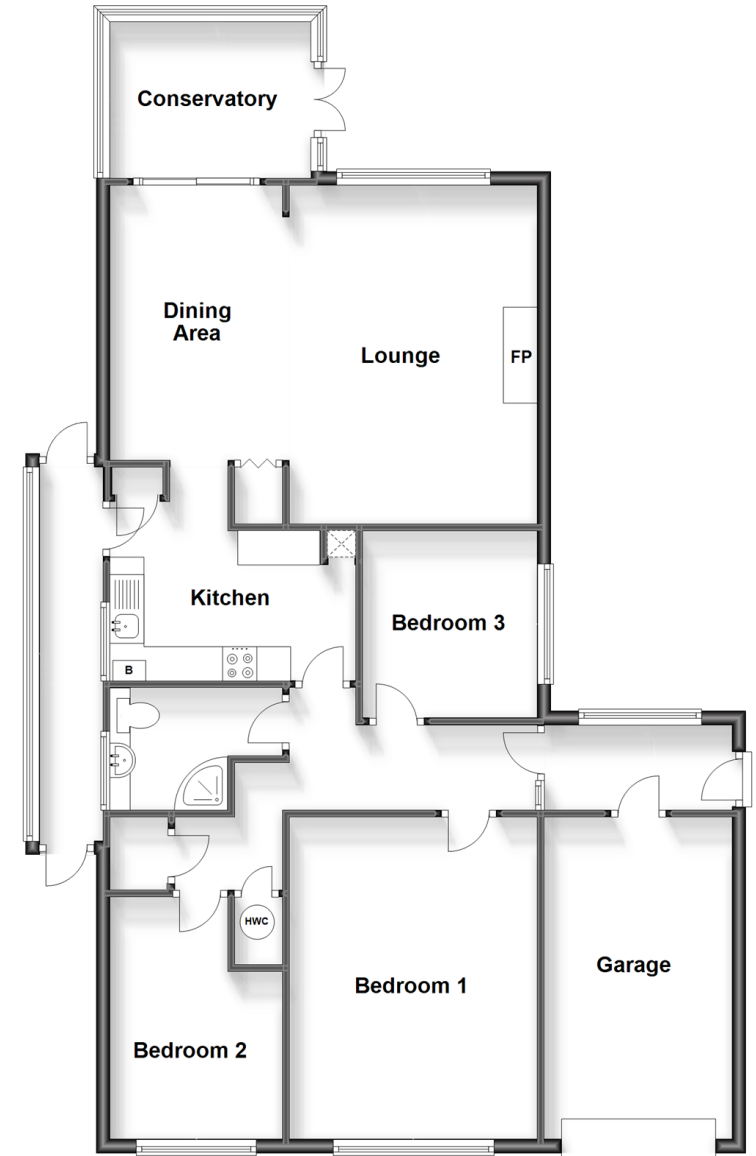
Porch: 9'1 x 9'0 (2.77m x 2.75m)  
 Lounge: 16'5 x 11'9 (5.01m x 3.58m)  
 Dining Area: 13'1 x 8'3 (3.99m x 2.52m)  
 Conservatory: 9'6 x 7'5 (2.90m x 2.26m)  
 Kitchen: 12'3 (3.74m) x 8'8 (2.64m) narrowing to 7'2 (2.19m)  
 Bedroom 1: 15'2 x 11'9 (4.63m x 3.58m)  
 Bedroom 2: 8'9 x 8'3 (2.67m x 2.52m)  
 Bedroom 3: 8'9 x 8'3 (2.67m x 2.52m)  
 Shower Room: 11'6 (3.51m) x 8'4 (2.54m) narrowing to 5'8 (1.73m)  
 Hallway

### OUTSIDE

Off Road Parking  
 Garage: 15'6 x 8'9 (4.73m x 2.67m)  
 Front & Rear Gardens

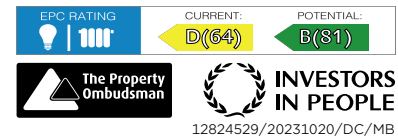
### Ground Floor

Approx. 116.5 sq. metres (1254.1 sq. feet)



**Call Hythe - 01303 267473 ■ [wardsofkent.co.uk](http://wardsofkent.co.uk)**

- Legal advice should be taken to verify fixtures/fittings, planning, alterations and/or lease details
- Appliances & services are untested, dimensions are approximate and floor plans are not to scale
- Through a Homewise Home For Life Plan people aged 60+ can secure this property for up to 59% less, by purchasing a Lifetime Lease.



12824529/20231020/DC/MB