

OVER 60?

Secure this property
for up to **59% less!**



Price

£530,000

Freehold

3x  2x  1x 

Donkey Street, Burmarsh, Romney Marsh,
Kent, TN29

Wards
Helping you move forwards



Main features

- Beautiful home surrounded by farm land and amazing views
- Large detached workshop, garage
- Spacious lounge/dining room with a log burner
- All bedrooms are large in size, kitchen/breakfast room
- Short drive to Hythe with its variety of shops and restaurants

Accommodation

GROUND FLOOR

Entrance Hall

Lounge/Dining Room: 22'1 x 12'6 (6.74m x 3.81m)

Kitchen/Breakfast Room: 12'11 x 11'8 (3.94m x 3.56m)

Bedroom 1 : 22'3 x 12'5 (6.79m x 3.79m)

Bedroom 2: 22'0 x 12'5 (6.71m x 3.79m)

Bedroom 3: 10'8 x 8'9 (3.25m x 2.67m)

En-Suite Shower Room

Dressing Room: 9'0 x 7'11 (2.75m x 2.41m)

Bathroom: 7'6 x 5'2 (2.29m x 1.58m)

Rear Hallway

Rear Porch

OUTSIDE

Off Road Parking

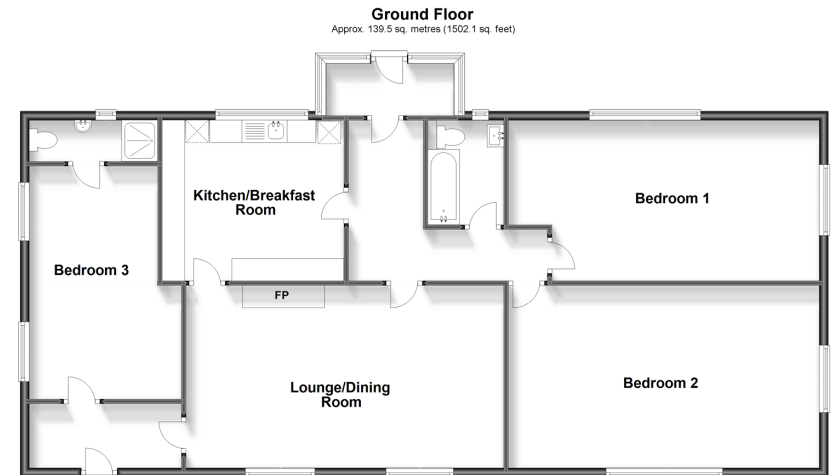
Detached Tandem Garage

Workshop

Side Garden

Call Hythe - 01303 267473 ■ wardsof Kent.co.uk

- Legal advice should be taken to verify fixtures/fittings, planning, alterations and/or lease details
- Appliances & services are untested, dimensions are approximate and floor plans are not to scale
- Through a Homewise Home For Life Plan people aged 60+ can secure this property for up to 59% less, by purchasing a Lifetime Lease.



12824533/20230803/MARK/MB