



Price
£250,000

Freehold

1x  1x  1x 

**Palmbeach Avenue,
Hythe, Kent, CT21**

Wards
Helping you move forwards



Main features

- In need of updating
- No onward chain, detached garage
- Large plot with potential to extend subject to planning permission
- Generous lounge/dining area
- Large, secluded garden with views of 'the roughs'
- Short walk to the bus stop and a short drive to Hythe town

Accommodation

GROUND FLOOR

Entrance Hall

Lounge: 15'8 (4.78m) x 11'4 (3.46m)
narrowing to 10'2 (3.10m)

Dining Area: 7'8 x 5'4 (2.34m x 1.63m)

Kitchen: 10'4 x 8'1 (3.15m x 2.47m)

Bedroom: 12'4 x 10'5 (3.76m x 3.18m)

Bathroom: 6'4 x 5'5 (1.93m x 1.65m)

OUTSIDE

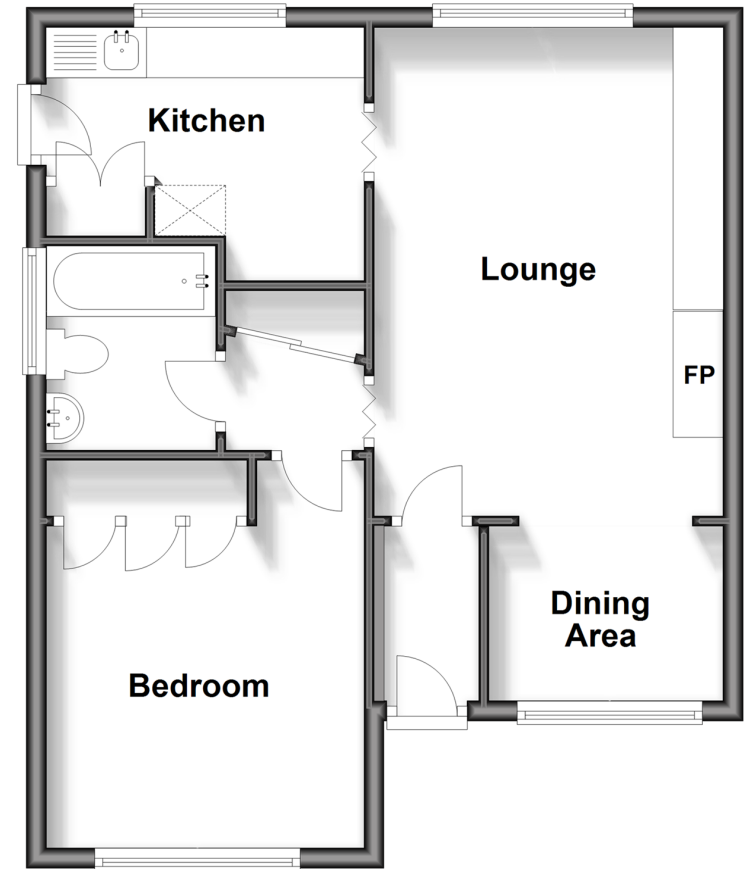
Off Road Parking

Garage: 15'6 x 8'4 (4.73m x 2.54m)

Front & Rear Gardens

Ground Floor

Approx. 49.7 sq. metres (534.5 sq. feet)



Call Hythe - 01303 267473 ■ wardsof Kent.co.uk

- Legal advice should be taken to verify fixtures/fittings, planning, alterations and/or lease details
- Appliances & services are untested, dimensions are approximate and floor plans are not to scale



12824535/20240104/MEL/MB