



Price
£435,000

Freehold

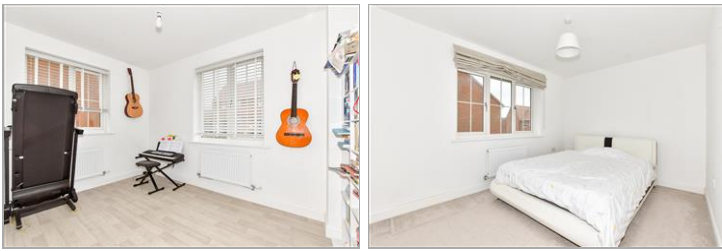
4x  2x  2x 

**Lake Drive, Hythe, Kent,
CT21**

OVER 60?

Secure this property
for up to **59% less!**

Wards
Helping you move forwards



Main features

- Stunning home on the popular Martello Lake development
- Remainder of the NHBC warranty
- Large kitchen, white goods remaining including new dishwasher
- Dining room which could be used as a bedroom and separate lounge
- Low maintenance sunny garden, car barn and parking for 2 cars

Accommodation

GROUND FLOOR

Entrance Hall

Kitchen: 15'9 x 15'0 (4.80m x 4.58m)

Dining Room: 10'7 x 9'7 (3.23m x 2.92m)

Cloakroom

Lounge: 16'8 x 10'2 (5.08m x 3.10m)

FIRST FLOOR

Landing

Bedroom 1: 13'1 x 10'1 (3.99m x 3.08m)

En-Suite Shower Room: 7'1 x 3'9 (2.16m x 1.14m)

Bedroom 2: 12'8 x 8'8 (3.86m x 2.64m)

Bedroom 3: 10'4 x 9'2 (3.15m x 2.80m)

Bedroom 4: 7'5 x 7'1 (2.26m x 2.16m)

Bathroom: 6'8 x 5'5 (2.03m x 1.65m)

OUTSIDE

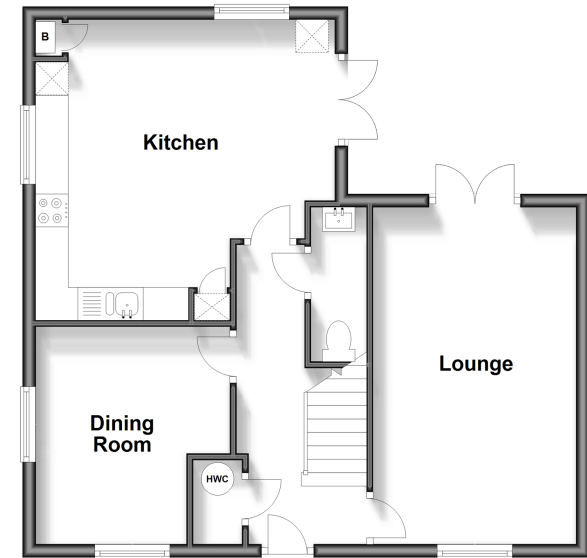
Off Road Parking

Car Barn

Front & Rear Gardens

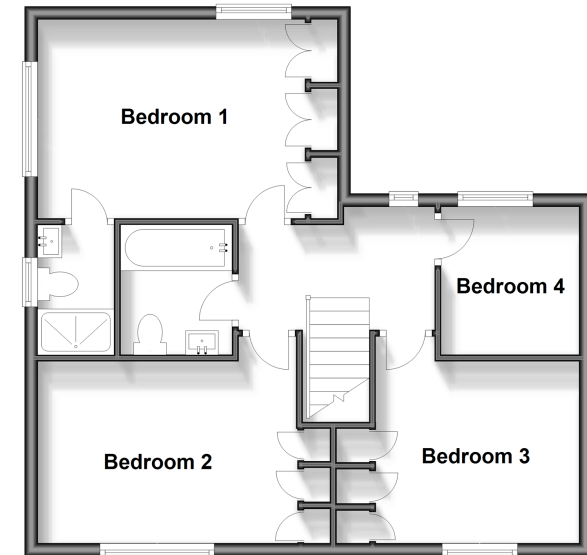
Ground Floor

Approx. 55.6 sq. metres (598.0 sq. feet)



First Floor

Approx. 55.6 sq. metres (598.0 sq. feet)



Call Hythe - 01303 267473 ■ wardsofkent.co.uk

- Legal advice should be taken to verify fixtures/fittings, planning, alterations and/or lease details
- Appliances & services are untested, dimensions are approximate and floor plans are not to scale
- Through a Homewise Home For Life Plan people aged 60+ can secure this property for up to 59% less, by purchasing a Lifetime Lease.



12824566/20240330/MEL/MB