



Price

£132,500

Leasehold

2x  1x  1x 

**Blythe Court, Prospect
Road, Hythe, Kent, CT21**

Wards
Helping you move forwards



Main features

- **Spacious retirement apartment exclusively for the over 60s**
- **No onward chain complications**
- **Convenient for the High Street, supermarkets and canal**
- **Communal lounge and conservatory, car park and lift service available**
- **New carpets fitted in 2023**

Accommodation

FIRST FLOOR

Entrance Hall

Lounge: 16'4 x 10'6 (4.98m x 3.20m)

Kitchen: 7'9 x 7'0 (2.36m x 2.14m)

Bedroom 1: 15'5 (4.70m) narrowing to 13'4 (4.07m) x 9'2 (2.80m)

Bedroom 2: 10'9 (3.28m) narrowing to 8'6 (2.59m) x 9'6 (2.90m)

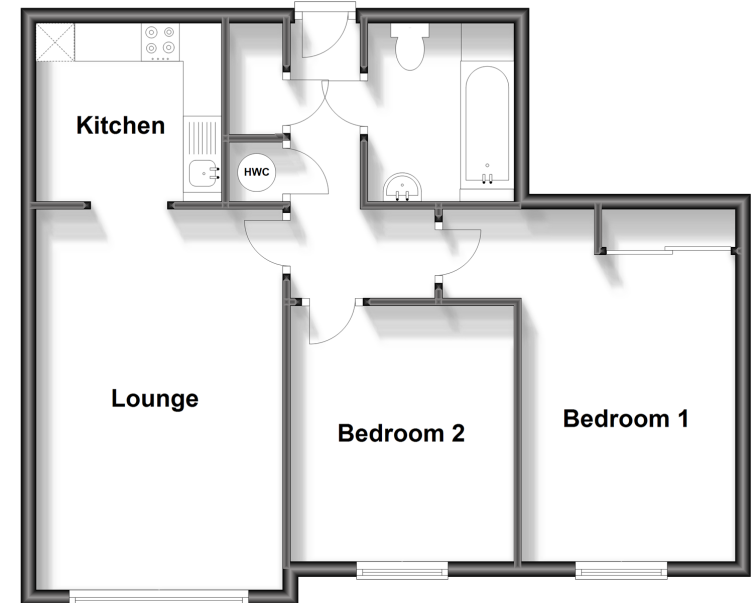
Bathroom: 7'11 x 6'3 (2.41m x 1.91m)

OUTSIDE

Communal Car Park

First Floor

Approx. 58.9 sq. metres (633.7 sq. feet)



Call Hythe - 01303 267473 ■ wardsofKent.co.uk

- Legal advice should be taken to verify fixtures/fittings, planning, alterations and/or lease details
- Appliances & services are untested, dimensions are approximate and floor plans are not to scale



12824579/20231027/MARK/MARK