



Price

£122,000

Leasehold

1x  1x  1x 

**Blythe Court, Prospect
Road, Hythe, Kent, CT21**

Wards
Helping you move forwards



Main features

- **Bright and airy second floor retirement apartment exclusively for the over 60's**
- **No onward chain complications**
- **Convenient for the High Street and supermarkets**
- **Close to the Royal Military Canal**
- **Communal lounge and conservatory; lift service available**

Accommodation

SECOND FLOOR

Entrance Hall

Lounge: 14'6 x 10'9 (4.42m x 3.28m)

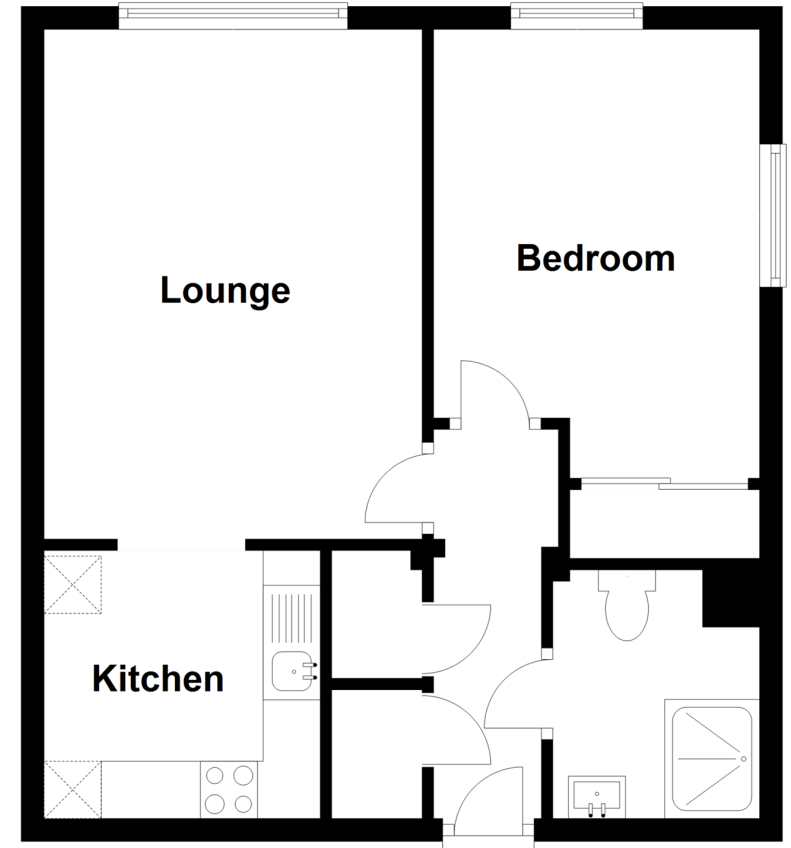
Kitchen: 7'9 x 7'7 (2.36m x 2.31m)

Bedroom: 12'8 x 9'4 (3.86m x 2.85m)

Shower Room: 6'9 x 6'8 (2.06m x 2.03m)

Second Floor

Approx. 43.2 sq. metres (464.6 sq. feet)



Call Hythe - 01303 267473 ■ wardsofkent.co.uk

- Legal advice should be taken to verify fixtures/fittings, planning, alterations and/or lease details
- Appliances & services are untested, dimensions are approximate and floor plans are not to scale



12824589/20230825/MARK/MB