



OVER 60?

Secure this property
for up to **59% less!**

Price

£450,000

Freehold

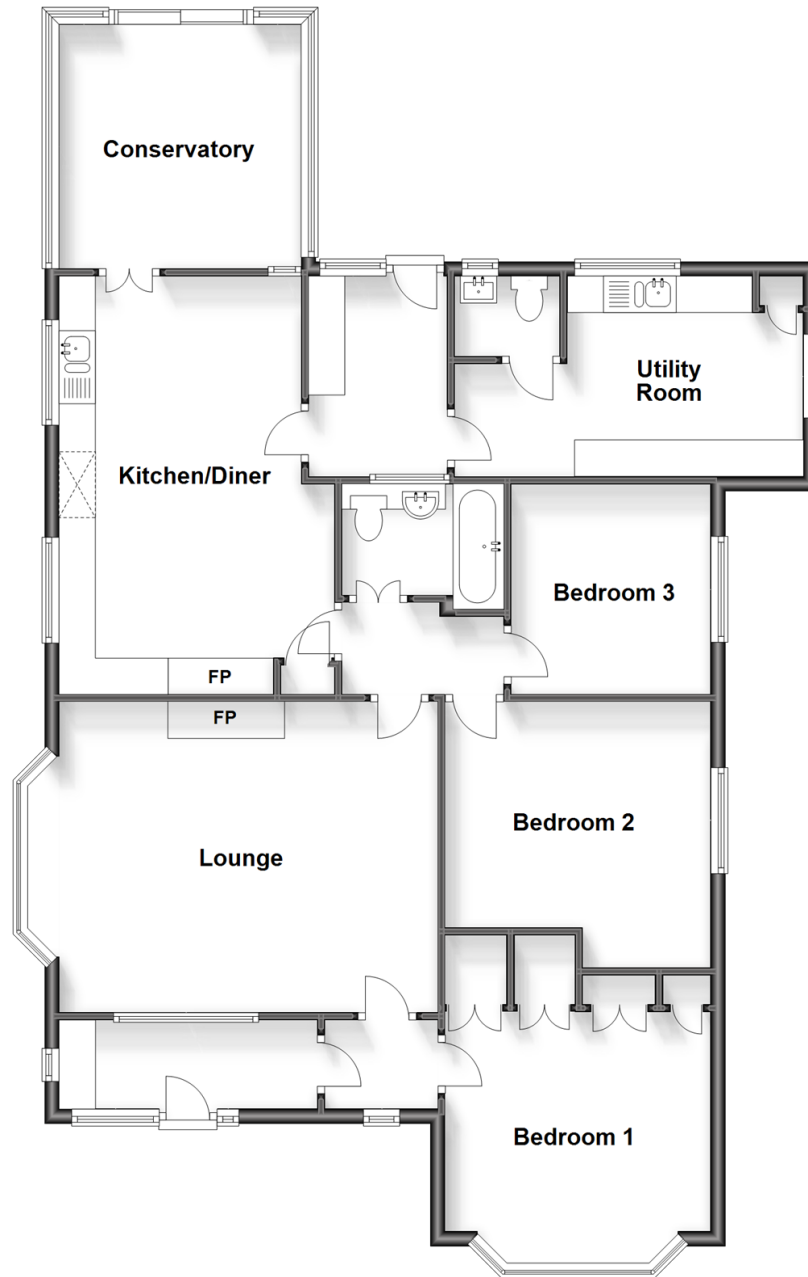
3x  1x  1x 

**Kingsway, Dymchurch,
Romney Marsh, Kent,
TN29**

Wards
Helping you move forwards

Ground Floor

Approx. 124.3 sq. metres (1337.7 sq. feet)



Accommodation

GROUND FLOOR

Porch: 11'7 x 4'6 (3.53m x 1.37m)

Lobby: 4'7 x 4'5 (1.40m x 1.35m)

Bedroom 1: 12'11 up to fitted wardrobes x 11'11 (3.94m x 3.63m)

Lounge: 18'7 up to bay x 13'11 (5.67m x 4.24m)

Inner Hallway

Bedroom 2: 11'11 up to recess x 11'11 (3.63m x 3.63m)

Bedroom 3: 9'5 x 8'11 (2.87m x 2.72m)

Bathroom: 7'3 x 5'6 (2.21m x 1.68m)

Kitchen/Diner: 18'9 x 12'3 (5.72m x 3.74m)

Conservatory: 11'9 x 11'0 (3.58m x 3.36m)

Utility Room: 15'8 into door well x 9'4 (4.78m x 2.85m)

Cloakroom

Rear Lobby: 9'2 x 5'10 (2.80m x 1.78m)

OUTSIDE

Off Road Parking

Front & Rear Gardens

Bar

Shed

Workshop



Main features

- Spacious home on a sought after private estate close to the beach and village centre
- Large kitchen/diner and conservatory that opens onto the garden
- Large garden with covered patio, pergola and BBQ area, bar, raised borders, workshop and shed
- Large utility room
- Driveway providing ample off road parking



Nearest Schools

Primary Schools: Dymchurch Primary 0.9 miles, Palmarsh Primary 3.0 miles, Lympne Primary 3.0 miles

Secondary Schools: Marsh Academy 4.8 miles, Brockhill Park Performing Arts College 5.3 miles



Transport Information

Train Stations: Sandling 5.7 miles, Westenhanger 6.9 miles, Folkestone Central 7.7 miles



Address

Kingsway, Dymchurch, Romney Marsh, Kent, TN29



Directions

For directions to this property please contact us.



Wards
Helping you move forwards

Call Hythe Branch 01303 267473 ■ wardsofkent.co.uk



■ Legal advice should be taken to verify fixtures/fittings, planning, alterations and/or lease details ■ Appliances & services are untested, dimensions are approximate and floor plans are not to scale
■ Through a Homewise Home For Life Plan people aged 60+ can secure this property for up to 59% less, by purchasing a Lifetime Lease.



12824609/20231021/MARK/MARK