



OVER 60?

Secure this property
for up to **59% less!**

Price

£240,000

Freehold

1x  1x  1x 

**Somerfield Barn Court,
Main Road, Sellindge,
Ashford, Kent, TN25**

Wards
Helping you move forwards



Main features

- Stunning home forming part of a grade II listed barn conversion
- Lounge and dining area with views over the square
- Private rear garden with access to the garage and covered patio area
- Use of the communal garden
- Close to village centre, woodland and countryside walks

Accommodation

GROUND FLOOR

Entrance Hall

Lounge: 13'10 into recess x 9'9 (4.22m x 2.97m)

Dining Area: 9'9 x 8'2 into bay (2.97m x 2.49m)

Kitchen: 8'6 x 7'5 (2.59m x 2.26m)

Bedroom: 14'4 x 9'5 (4.37m x 2.87m)

Bathroom: 8'8 x 6'7 (2.64m x 2.01m)

OUTSIDE

Store Room: 6'7 x 6'2 (2.01m x 1.88m)

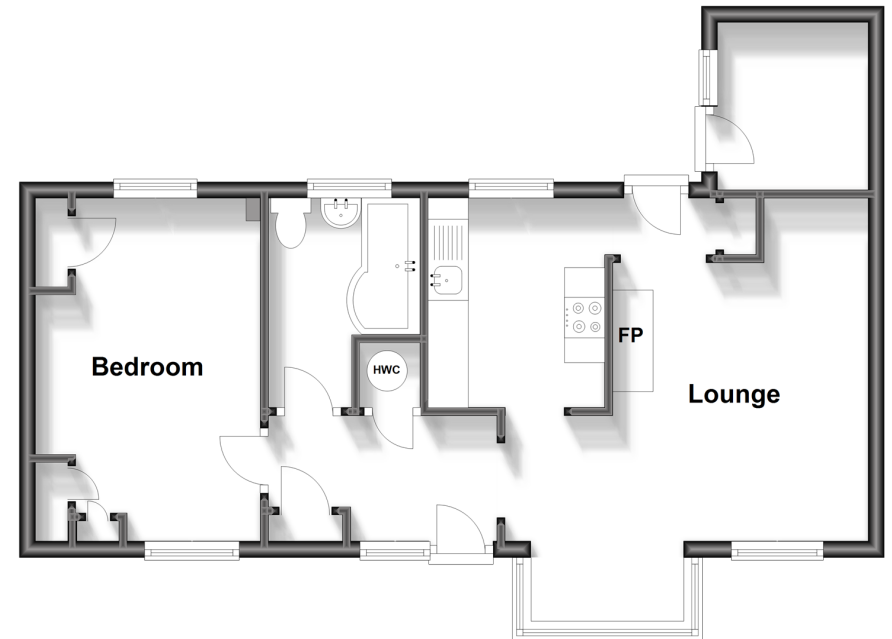
Garage

Rear Garden

Communal Garden

Ground Floor

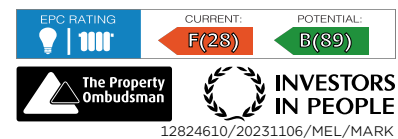
Approx. 48.7 sq. metres (524.3 sq. feet)



Call Hythe - 01303 267473 ■ wardsof Kent.co.uk

- If buying to let, the energy rating will need to be improved to at least 'E' rating before you can let the property
- Appliances & services are untested, dimensions are approximate and floor plans are not to scale

- Legal advice should be taken to verify fixtures/fittings, planning, alterations and/or lease details
- Through a Homewise Home For Life Plan people aged 60+ can secure this property for up to 59% less, by purchasing a Lifetime Lease.



12824610/20231106/MEL/MARK