



OVER 60?

Secure this property
for up to **59% less!**

Price
£340,000

Freehold

3x  1x  1x 

**Cobden Road, Hythe,
Kent, CT21**

Wards
Helping you move forwards



Main features

- Beautiful period home close to the seafront
- Open plan lounge and dining area with multi fuel fire
- Sunny rear garden
- No onward chain
- Handy for the town centre and local parks

Accommodation

GROUND FLOOR

Entrance Porch

Lounge: 14'3 x 11'11 (4.35m x 3.63m)

Dining Area: 11'11 (3.63m) narrowing to 9'4 (2.85m) x 10'6 (3.20m)

Kitchen: 9'9 x 7'0 (2.97m x 2.14m)

Inner Hall

Bathroom: 6'8 x 5'5 (2.03m x 1.65m)

FIRST FLOOR

Landing

Bedroom 1: 11'11 x 11'11 (3.63m x 3.63m)

Bedroom 2: 13'3 x 7'1 (4.04m x 2.16m)

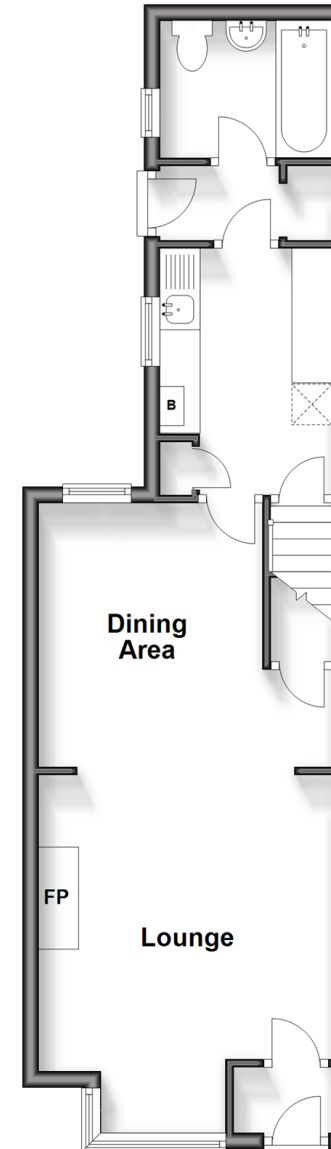
Bedroom 3: 11'1 x 6'5 (3.38m x 1.96m)

OUTSIDE

Front & Rear Gardens

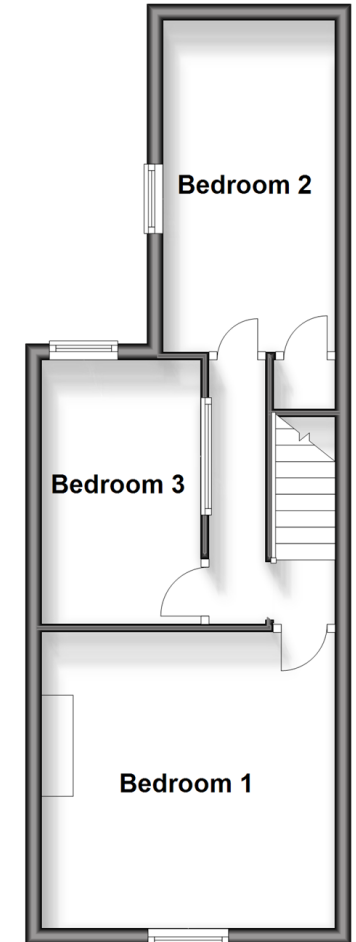
Ground Floor

Approx. 40.4 sq. metres (434.4 sq. feet)



First Floor

Approx. 34.4 sq. metres (369.8 sq. feet)



Call Hythe - 01303 267473 ■ wardsofkent.co.uk

- Legal advice should be taken to verify fixtures/fittings, planning, alterations and/or lease details
- Appliances & services are untested, dimensions are approximate and floor plans are not to scale
- Through a Homewise Home For Life Plan people aged 60+ can secure this property for up to 59% less, by purchasing a Lifetime Lease.



12824622/20240408/DC/MARK