



OVER 60?

Secure this property
for up to **59% less!**

Price
£460,000

Freehold

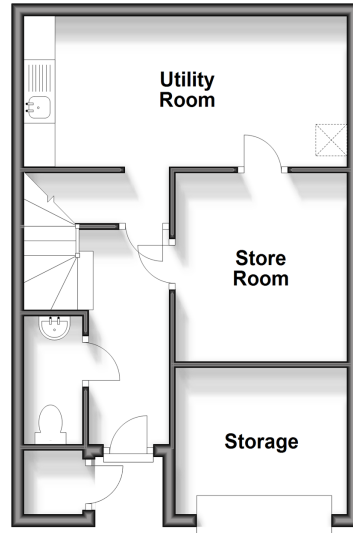
4x  3x  2x 

**Alexandra Corniche,
Seabrook, Kent, CT21**

Wards
Helping you move forwards

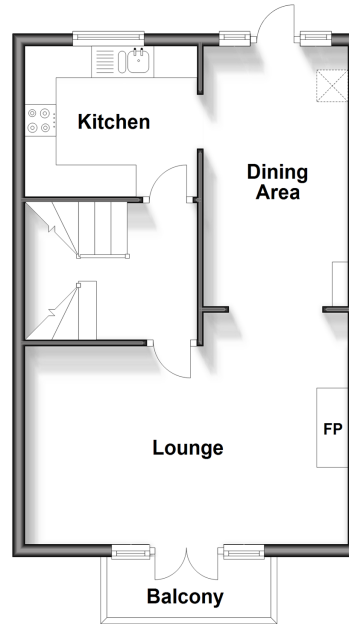
Ground Floor

Approx. 39.2 sq. metres (421.5 sq. feet)



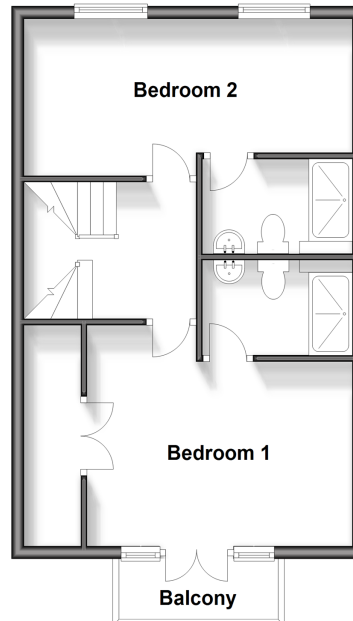
First Floor

Approx. 40.8 sq. metres (439.3 sq. feet)



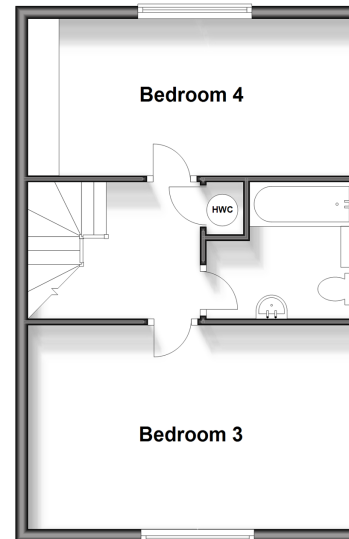
Second Floor

Approx. 43.9 sq. metres (472.8 sq. feet)



Third Floor

Approx. 42.5 sq. metres (457.6 sq. feet)



Accommodation

GROUND FLOOR

Entrance Hall

Store Room: 9'9 x 8'8 (2.97m x 2.64m)

Cloakroom

Utility Room: 17'0 x 7'8 (5.19m x 2.34m)

FIRST FLOOR

Landing

Kitchen: 9'1 x 8'2 (2.77m x 2.49m)

Dining Area: 13'9 x 7'6 (4.19m x 2.29m)

Lounge: 16'11 (5.16m) x 12'9 (3.89m)
narrowing to 10'4 (3.15m)

Balcony

SECOND FLOOR

Landing

Bedroom 1: 14'2 x 10'1 (4.32m x 3.08m)

Balcony

En-Suite Shower Room

Bedroom 2: 16'9 x 8'2 maximum (5.11m x 2.49m)

En-Suite Shower Room

THIRD FLOOR

Landing

Bedroom 3: 16'9 x 10'5 (5.11m x 3.18m)

Bedroom 4: 16'9 x 8'3 (5.11m x 2.52m)

Bathroom: 7'9 x 7'3 (2.36m x 2.21m)

OUTSIDE

Off Road Parking

Storage

Front & Rear Gardens



Main features

- Amazing family home with double bedrooms, two with en-suite shower rooms
- Sea glimpses from bedrooms 1 and 3
- Low maintenance rear garden
- Garage has been partitioned into an outside storage and internal store room
- Large utility room, two balconies to relax on and soak up the sun



Nearest Schools

Primary Schools: Seabrook C of E Primary 0.4 miles, Folkestone, St Martin's C of E Primary 1.3 miles

Secondary Schools: The Folkestone School for Girls 1.9 miles, The Harvey Grammar School 2.8 miles



Transport Information

Train Stations: Folkestone West High Speed Link 2.7 miles, Folkestone Central 3.0 miles, Sandling 3.4 miles



Address

Alexandra Corniche, Seabrook, Kent, CT21



Directions

For directions to this property please contact us.



Call Hythe Branch 01303 267473 ■ wardsofkent.co.uk



■ Legal advice should be taken to verify fixtures/fittings, planning, alterations and/or lease details ■ Appliances & services are untested, dimensions are approximate and floor plans are not to scale
■ Through a Homewise Home For Life Plan people aged 60+ can secure this property for up to 59% less, by purchasing a Lifetime Lease.



12824635/20240309/MB/MARK